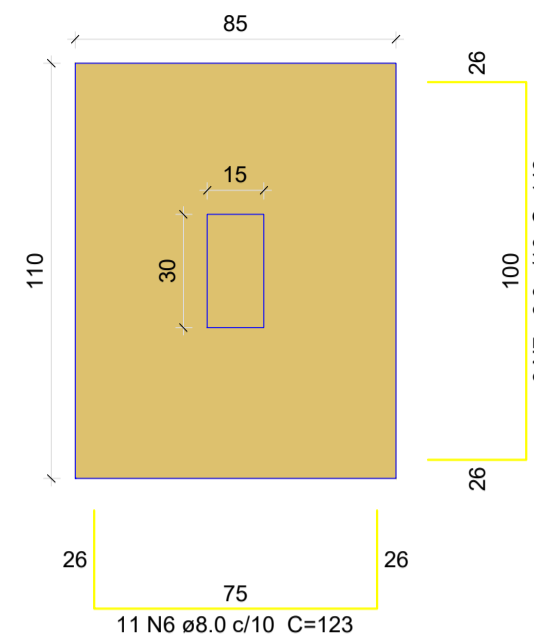
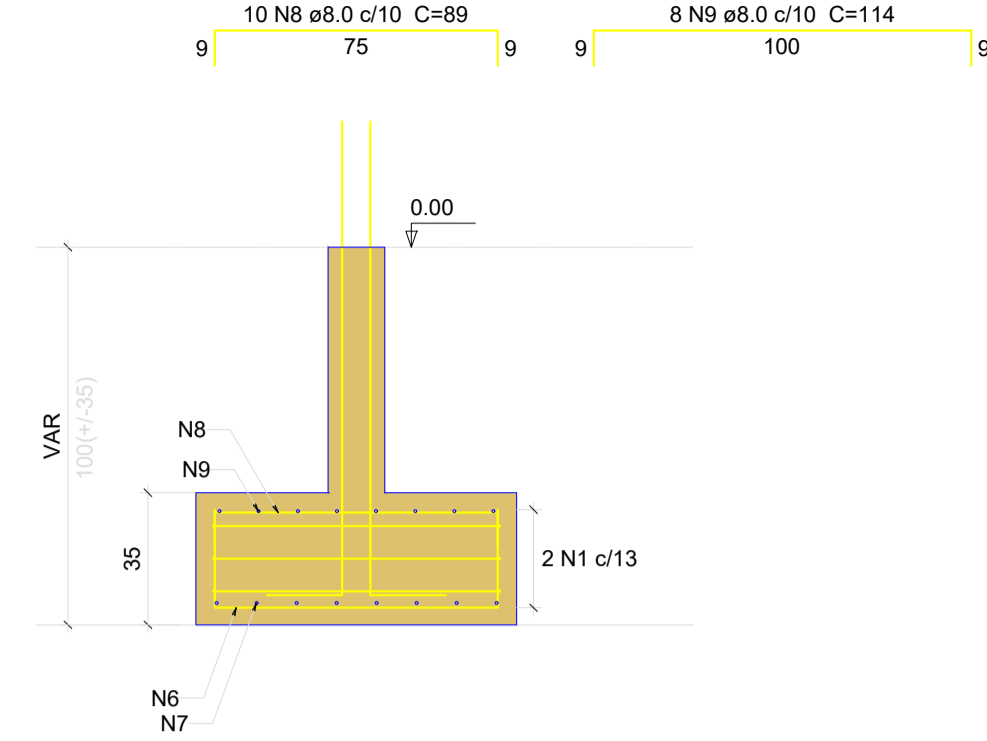


S21  
PLANTA  
ESC 1:2

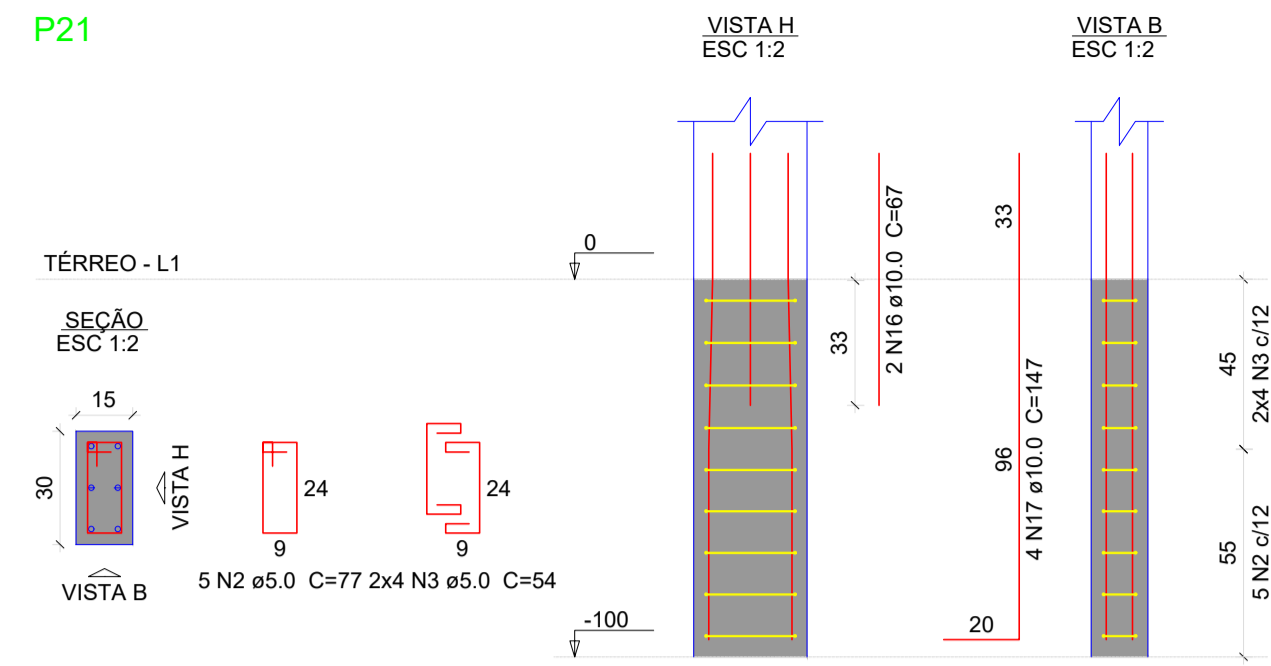


Solo com capacidade de suporte > 1.50 kgf/cm<sup>2</sup>  
Solo compactado sobre a sapata  
peso específico > 1600.00 kg/m<sup>3</sup>

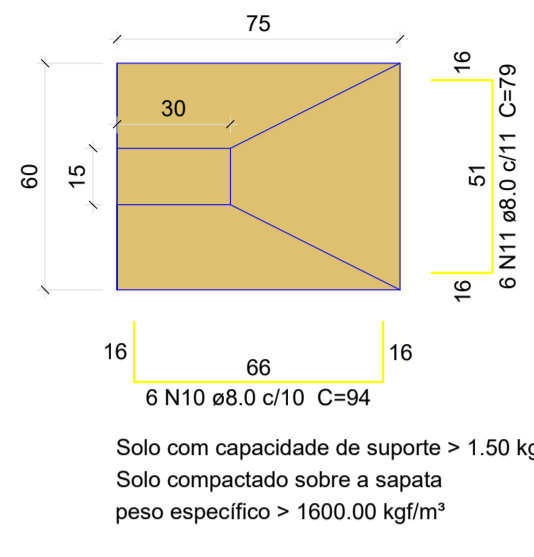
CORTE  
ESC 1:2



P21

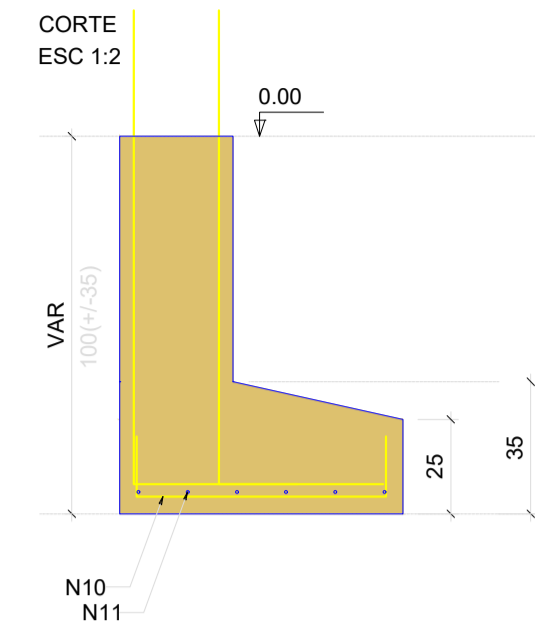


S22  
PLANTA  
ESC 1:2

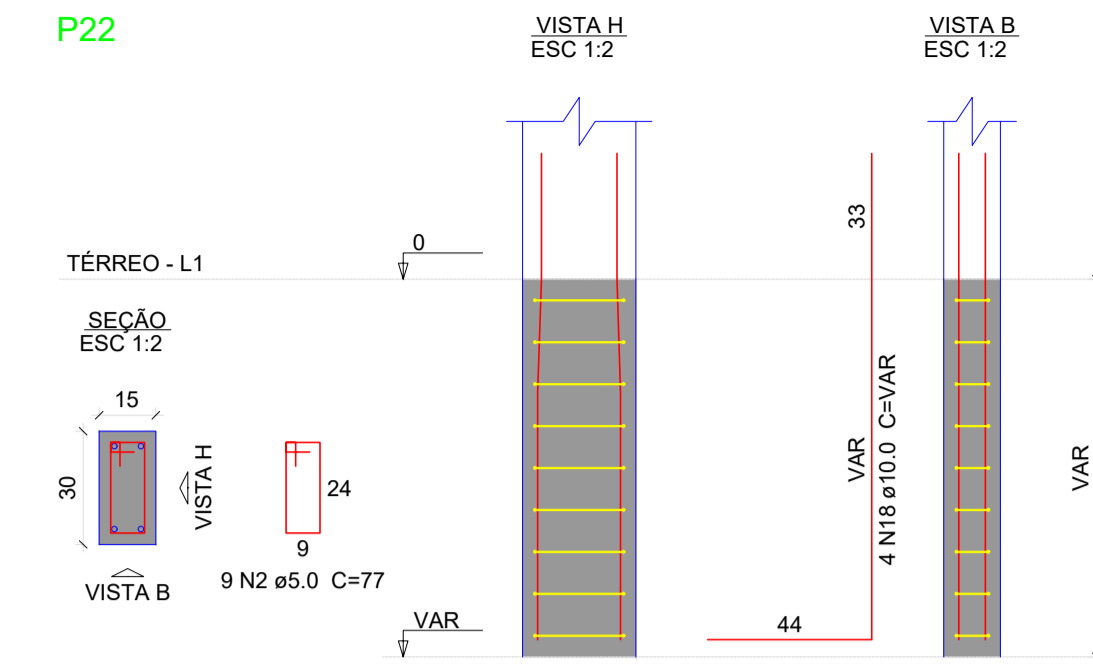


Solo com capacidade de suporte > 1.50 kgf/cm<sup>2</sup>  
Solo compactado sobre a sapata  
peso específico > 1600.00 kg/m<sup>3</sup>

CORTE  
ESC 1:2



P22



### Relação do aço

P21 P22 P23  
P24 S21 S22  
S23 S24

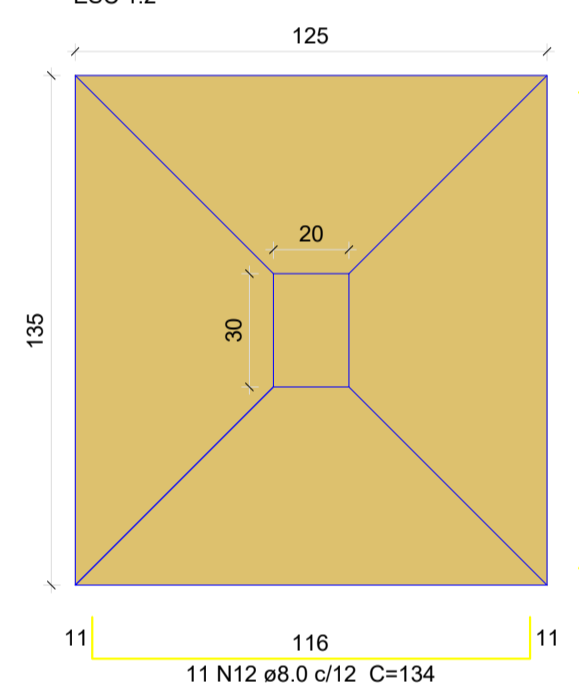
AÇO	N	DIAM (mm)	QUANT	C.UNIT (cm)	C.TOTAL (cm)
CA60	1	5.0	2	365	730
	2	5.0	14	77	1078
	3	5.0	8	54	432
	4	5.0	9	87	783
CA50	5	5.0	14	64	896
	6	8.0	11	123	1353
	7	8.0	8	148	1184
	8	8.0	10	89	890
	9	8.0	8	114	912
	10	8.0	6	94	564
	11	8.0	6	79	474
	12	8.0	11	134	1474
	13	8.0	10	144	1440
	14	8.0	14	129	1806
	15	8.0	12	139	1668
	16	10.0	16	67	1072
	17	10.0	8	147	1176
	18	10.0	4	VAR	VAR
	19	12.5	12	83	996
	20	12.5	4	155	620

### Resumo do aço

AÇO	DIAM (mm)	C.TOTAL (m)	PESO + 10 % (kg)
CA50	8.0	117.7	51.1
	10.0	29.4	19.9
	12.5	16.2	17.1
CA60	5.0	39.2	6.6
	<b>PESO TOTAL (kg)</b>		
CA50	88.1		
CA60	6.6		

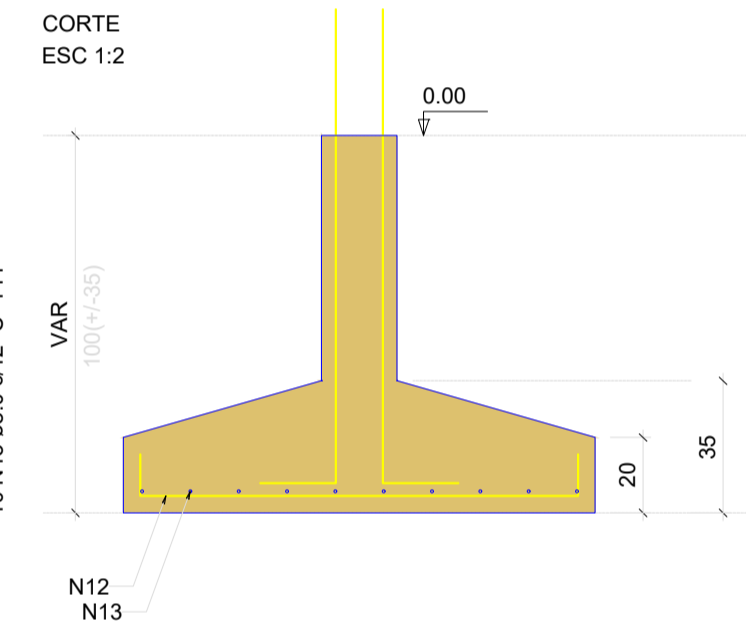
Volume de concreto (C-25) = 1.37 m<sup>3</sup>  
Volume de concreto (C-30) = 0.13 m<sup>3</sup>  
Área de forma = 6.51 m<sup>2</sup>

S23  
PLANTA  
ESC 1:2

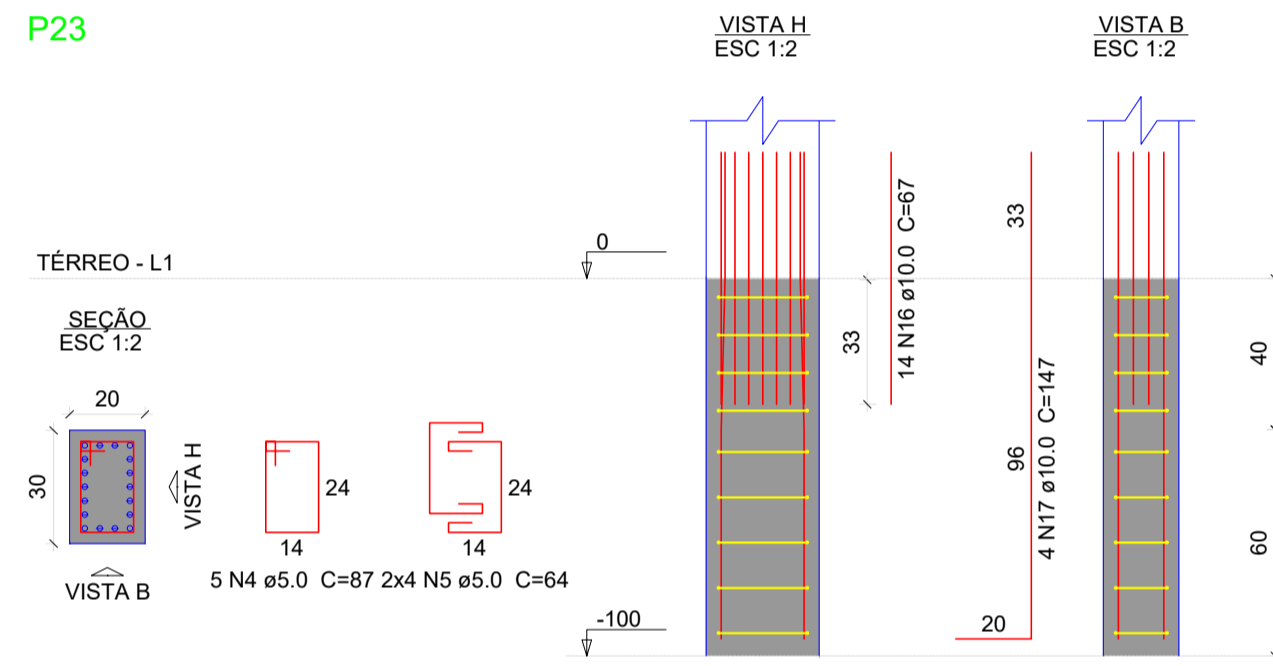


Solo com capacidade de suporte > 1.50 kgf/cm<sup>2</sup>  
Solo compactado sobre a sapata  
peso específico > 1600.00 kg/m<sup>3</sup>

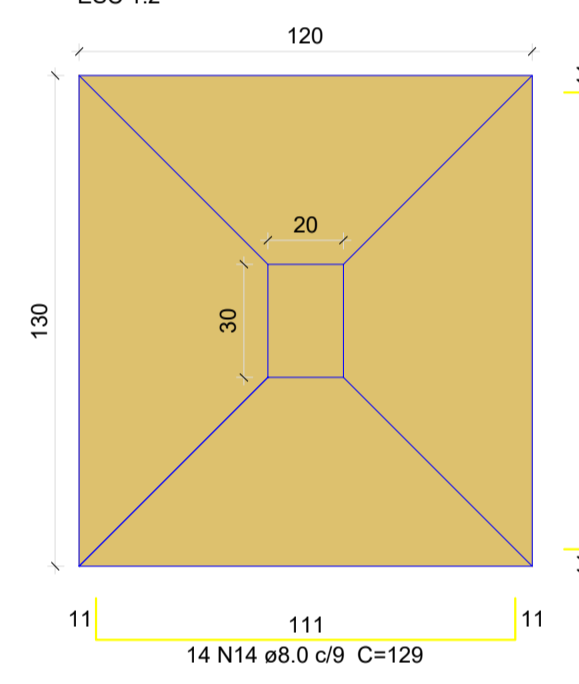
CORTE  
ESC 1:2



P23

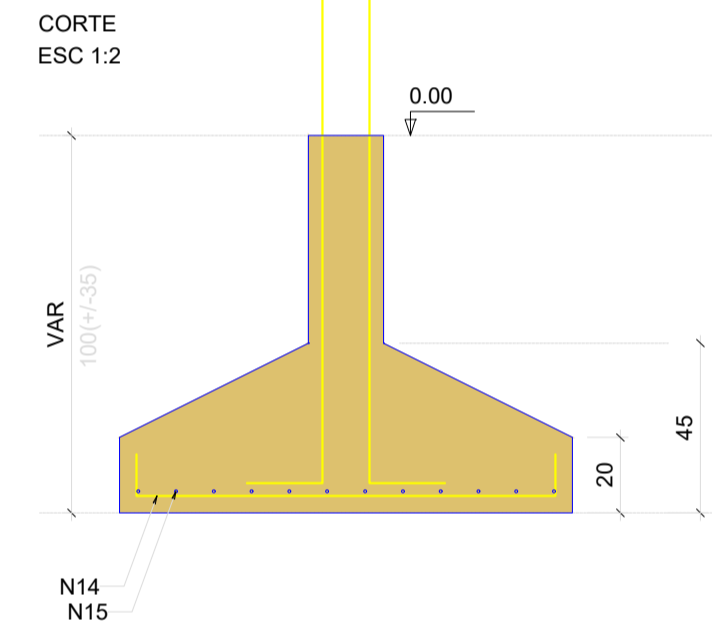


S24  
PLANTA  
ESC 1:2

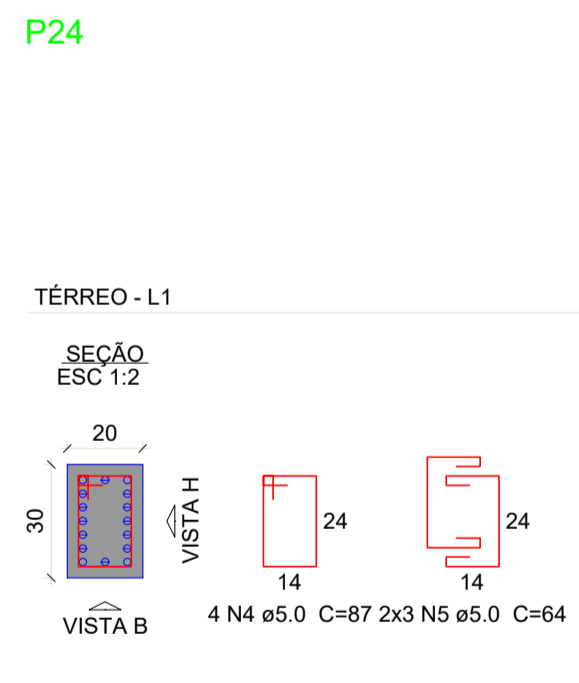


Solo com capacidade de suporte > 1.50 kgf/cm<sup>2</sup>  
Solo compactado sobre a sapata  
peso específico > 1600.00 kg/m<sup>3</sup>

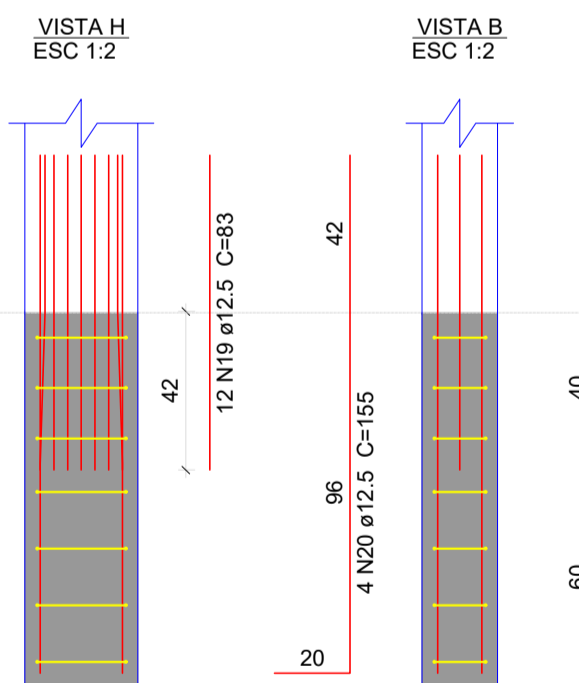
CORTE  
ESC 1:2



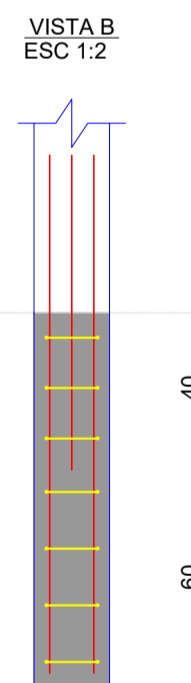
P24



VISTA H  
ESC 1:2



VISTA B  
ESC 1:2



ÁREA CONSTRUIDA: 300,28 m <sup>2</sup>	LOCALIZAÇÃO DA OBRA: LINHA PITANGUEIRA TUNÁPOLIS - SC
ESCALA: INDICADA	TIPO DE OBRA: PROJETO ESTRUTURAL ESCOLA MUNICÍPIO DE TUNÁPOLIS
DATA: SET 2023	DESCRIÇÃO: DETALHAMENTO FUNDAÇÕES - 4
OBRA: AMPLIAÇÃO ESCOLAR	PROPRIETÁRIO: MUNICÍPIO DE TUNÁPOLIS / SC - CNP: 78.486.198/0001-62 RESP. TÉCNICO: ENG. CIVIL BRUNA CAROLINA JACHINSKI - CREA 263013