

Relação do aço

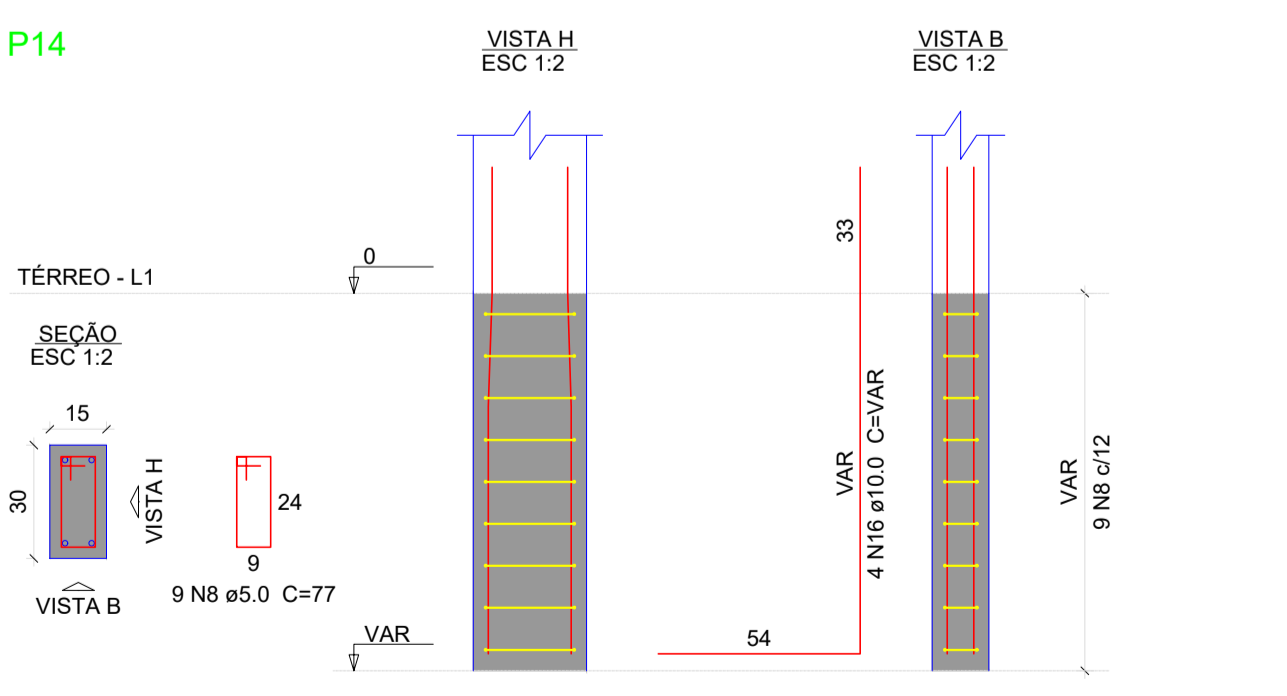
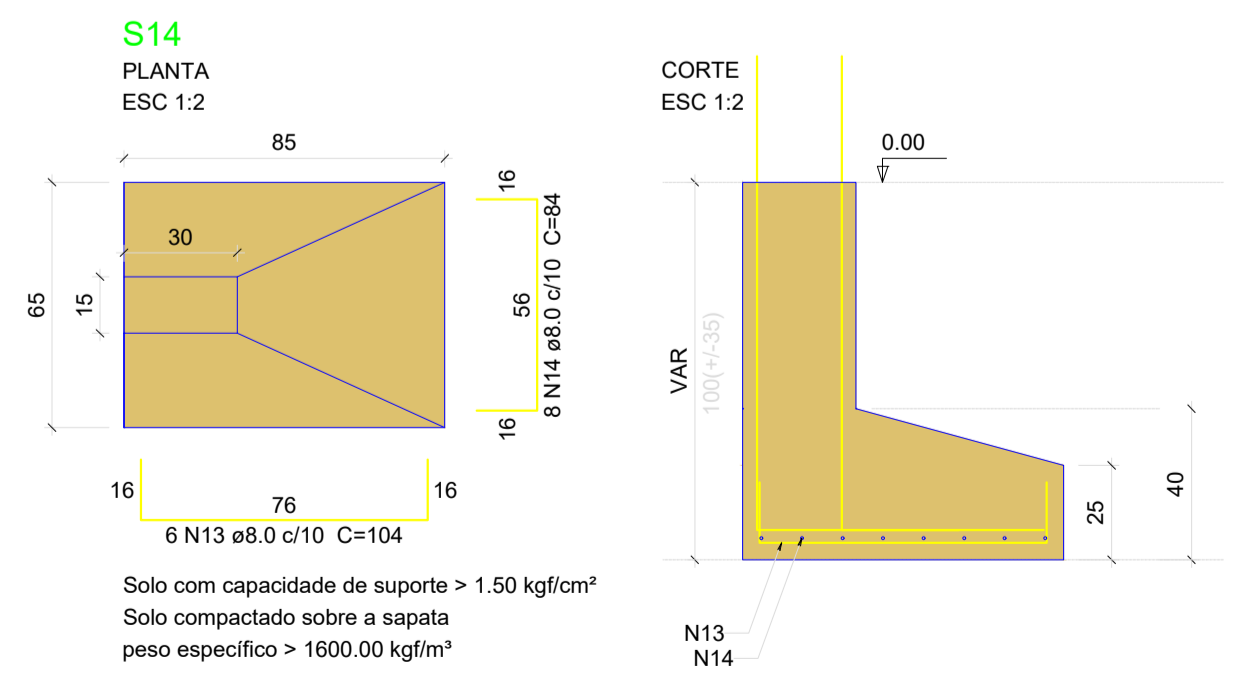
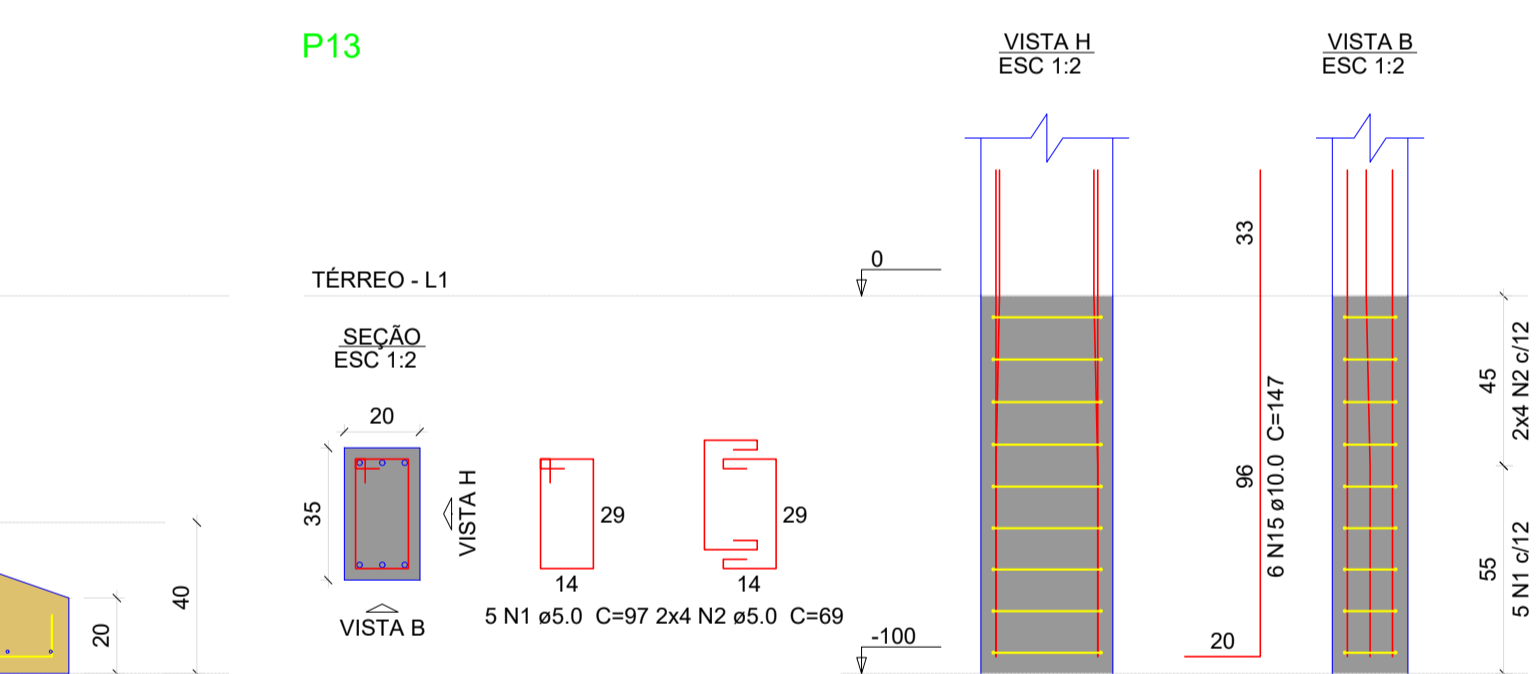
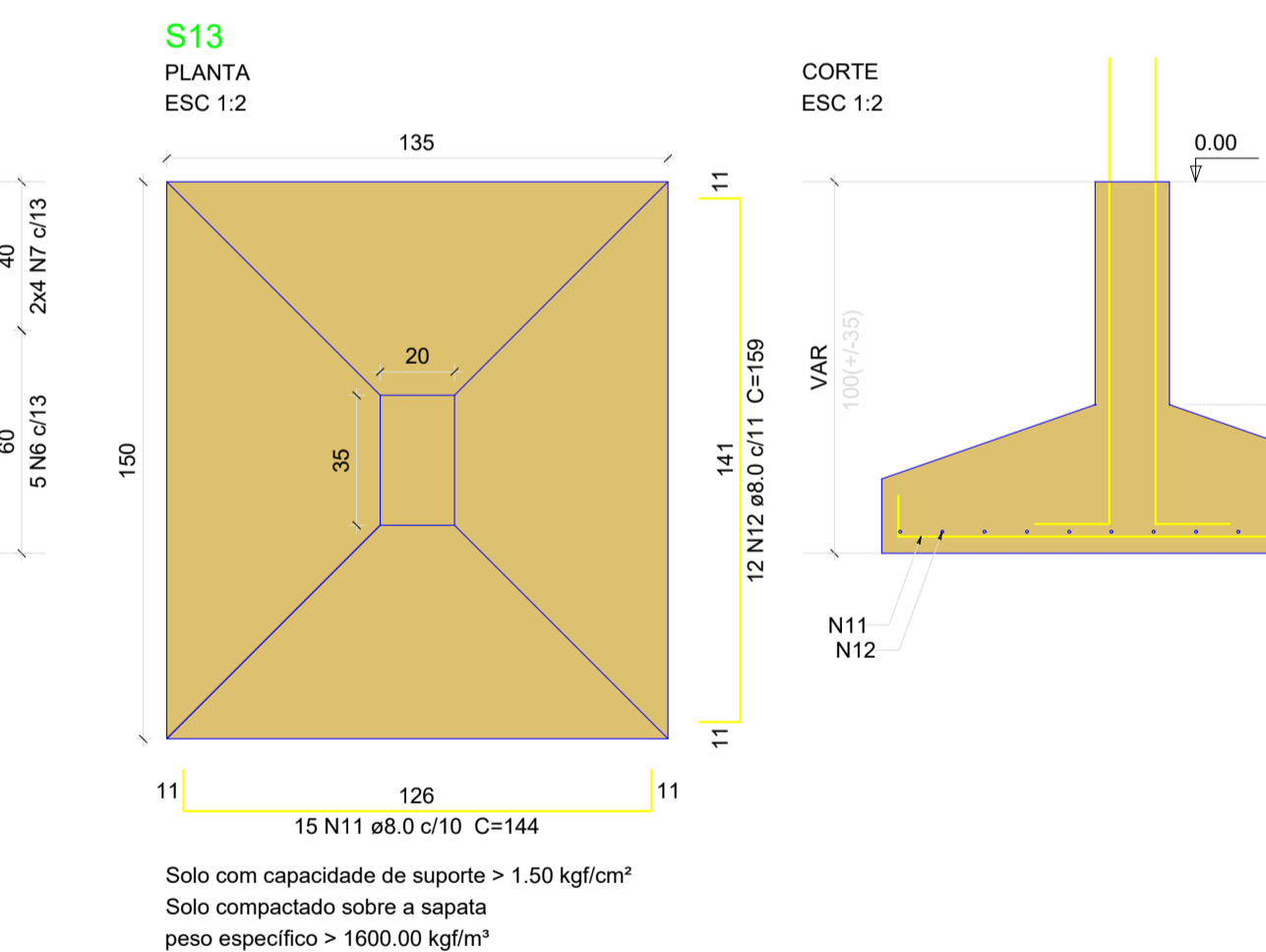
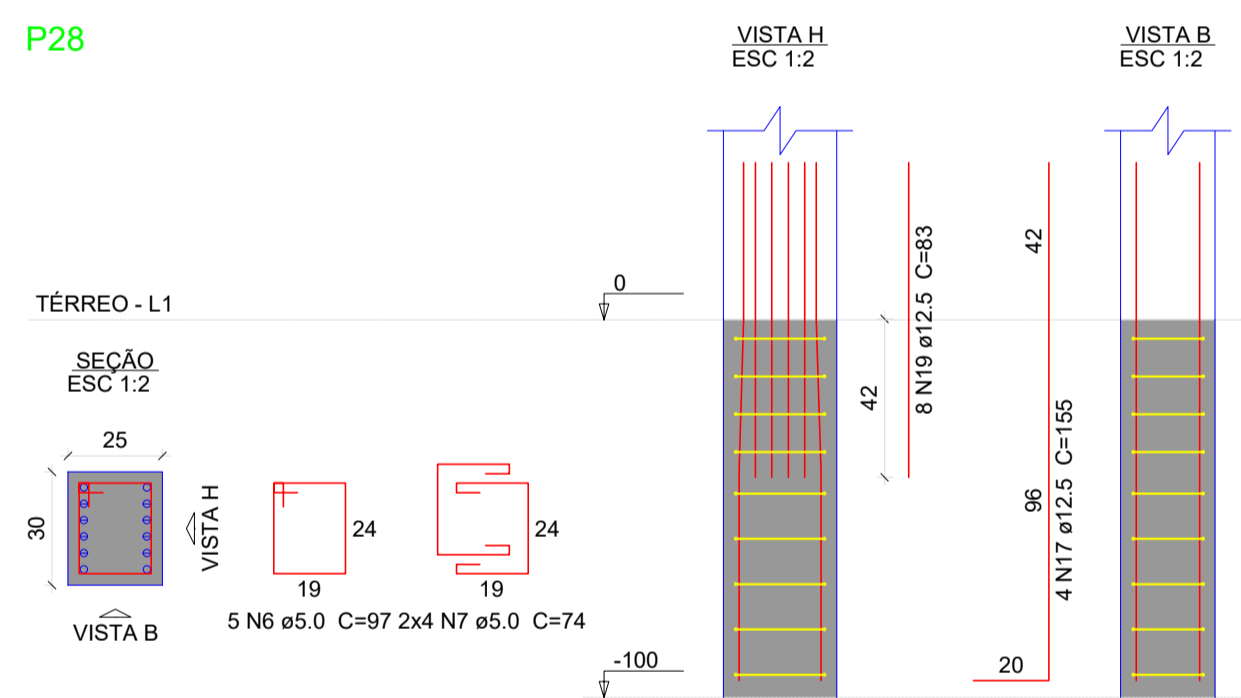
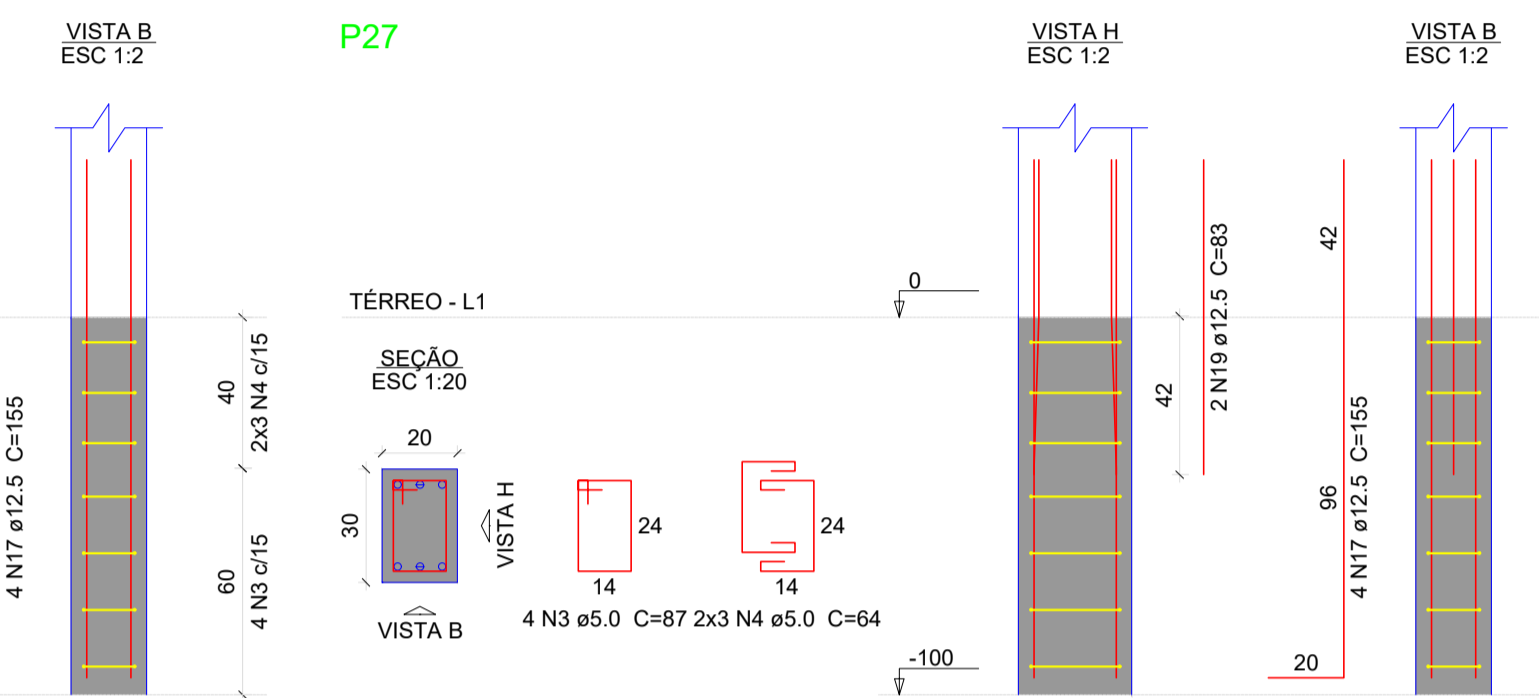
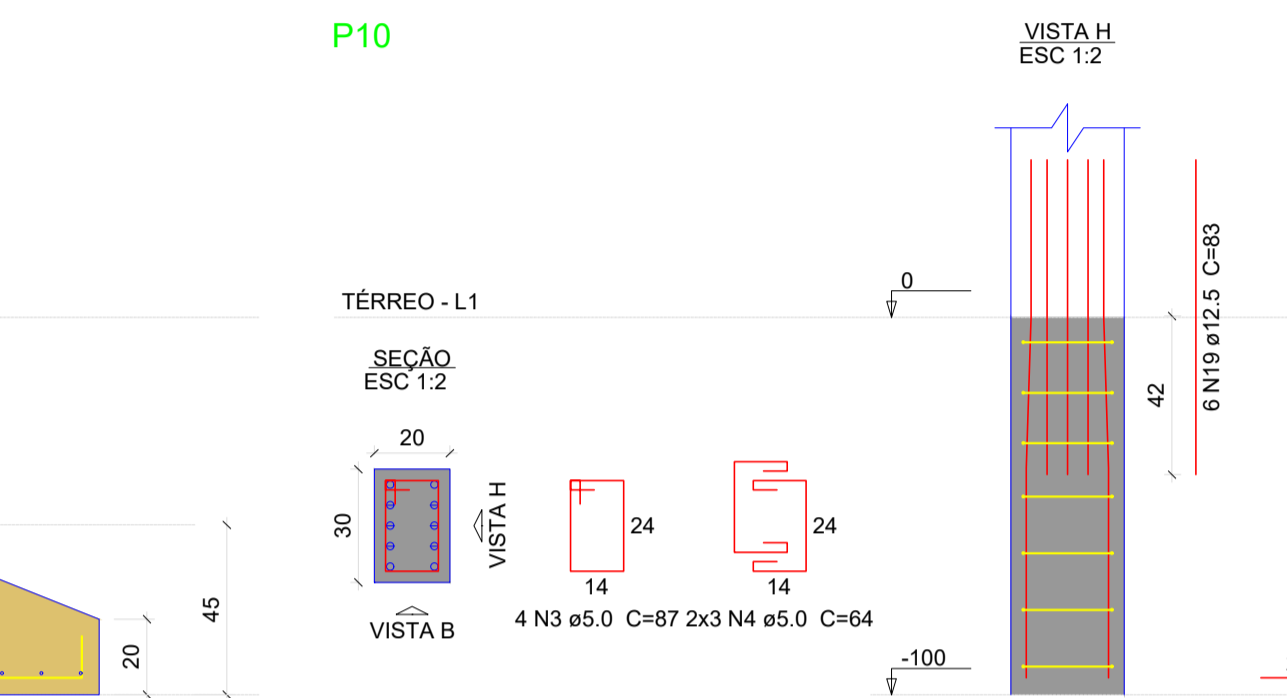
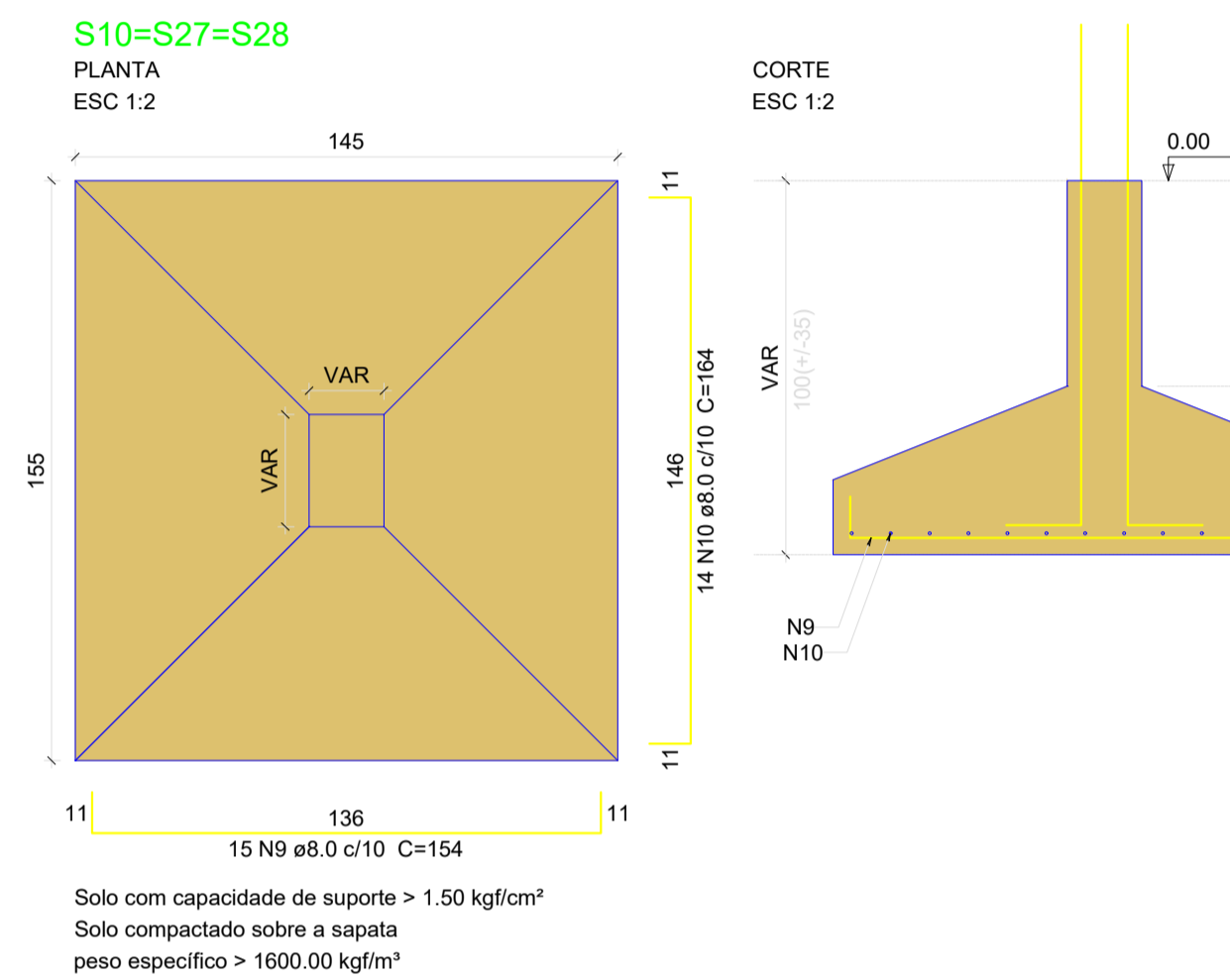
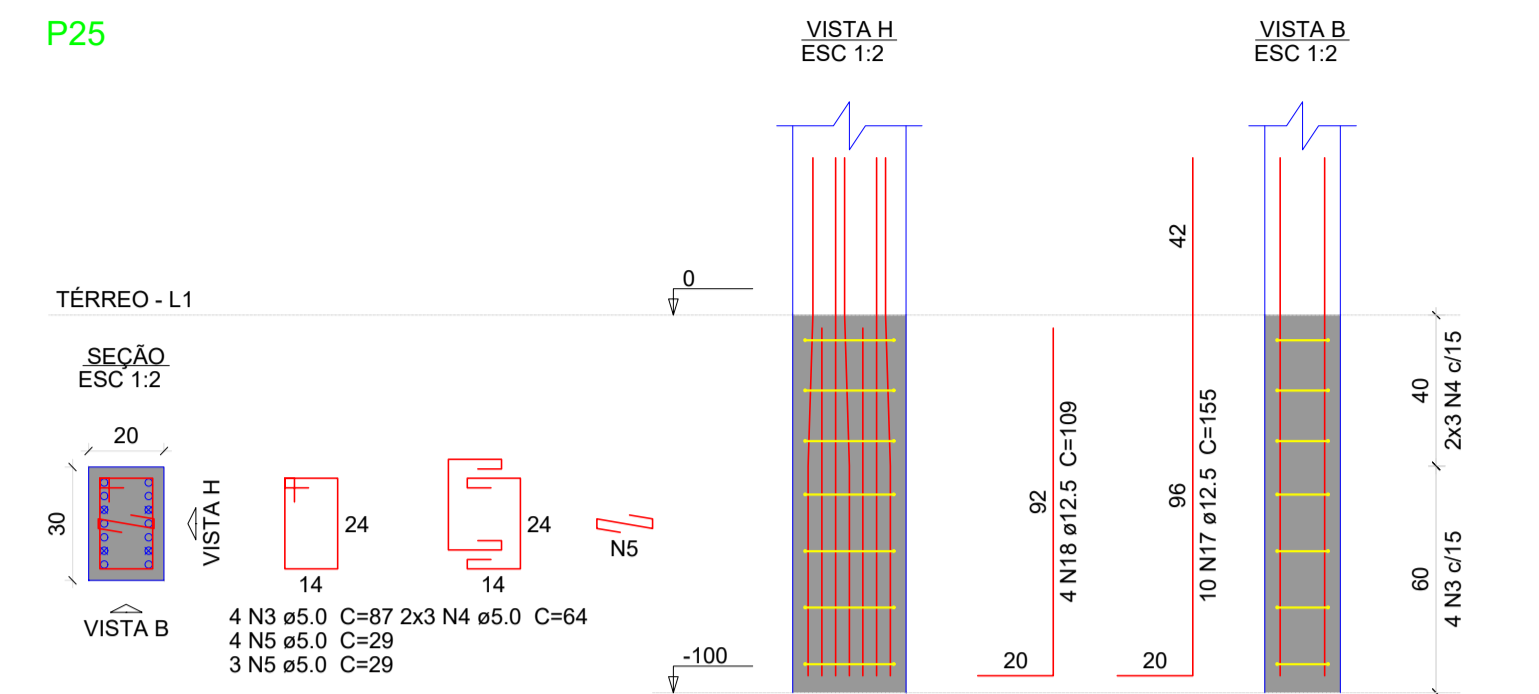
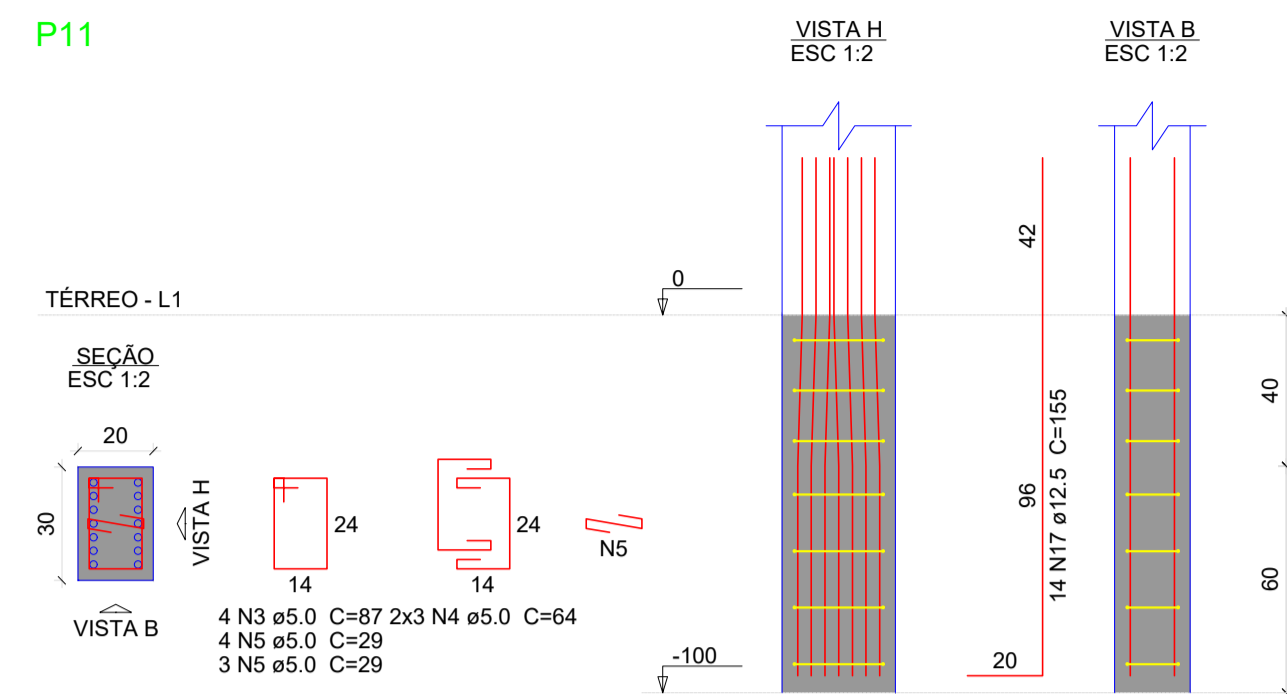
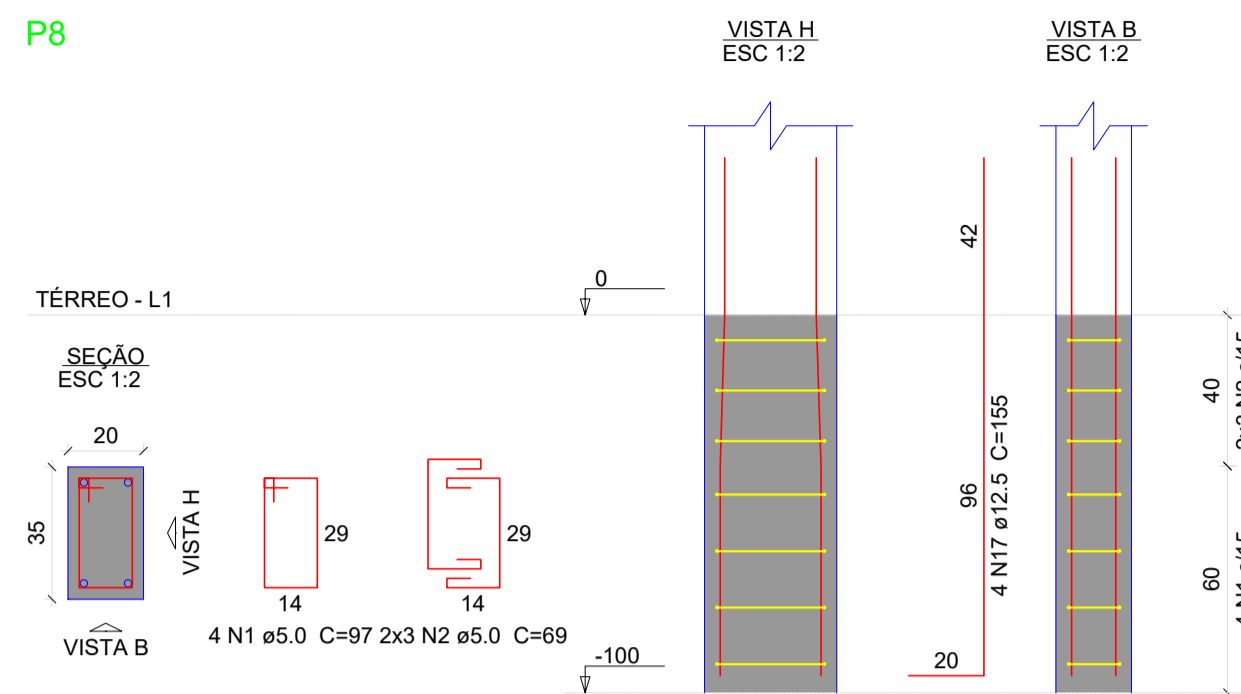
P8	P10	P11
P13	P14	P25
P27	P28	S13
S14	3xS27	

AÇO	N	DIAM (mm)	QUANT	C.UNIT (cm)	C.TOTAL (cm)
CA60	1	5.0	9	97	873
	2	5.0	14	69	966
	3	5.0	16	87	1392
	4	5.0	24	64	1536
	5	5.0	14	29	406
	6	5.0	5	97	485
	7	5.0	8	74	592
	8	5.0	9	77	693
	9	8.0	45	154	6930
	10	8.0	42	164	6888
	11	8.0	15	144	2160
	12	8.0	12	159	1908
	13	8.0	6	104	624
	14	8.0	8	84	672
	15	10.0	6	147	882
	16	10.0	4	VAR	VAR
	17	12.5	40	155	6200
	18	12.5	4	109	436
	19	12.5	16	83	1328

Resumo do aço

AÇO	DIAM (mm)	C.TOTAL (m)	PESO + 10 % (kg)
CA50	8.0	191.9	83.3
	10.0	16.1	10.9
	12.5	79.7	84.4
CA60	5.0	69.5	11.8
PESO TOTAL (kg)			
CA50	178.5		
CA60	11.8		

Volume de concreto (C-30) = 0.28 m³
 Volume de concreto (C-25) = 2.76 m³
 Area de forma = 10.2 m²



ÁREA CONSTRUIDA:	300,28 m ²	LOCALIZAÇÃO DA OBRA:	LINHA PITANGUEIRA TUNÁPOLIS - SC
ESCALA:		TIPO DE OBRA:	PROJETO ESTRUTURAL ESCOLA MUNICÍPIO DE TUNÁPOLIS
INDICADA:		DESCRIÇÃO:	DETALHAMENTO FUNDAÇÕES - 2
DATA:	SET 2023	PROPRIETÁRIO:	
OBRA:	AMPLIAÇÃO ESCOLAR	MUNICÍPIO DE TUNÁPOLIS - SC - CNP: 78.486.198/0001-62	
		RESP. TÉCNICO:	ENG. CIVIL BRUNA CAROLINA JACHINSKI - CREA 263013