

Relação do aço

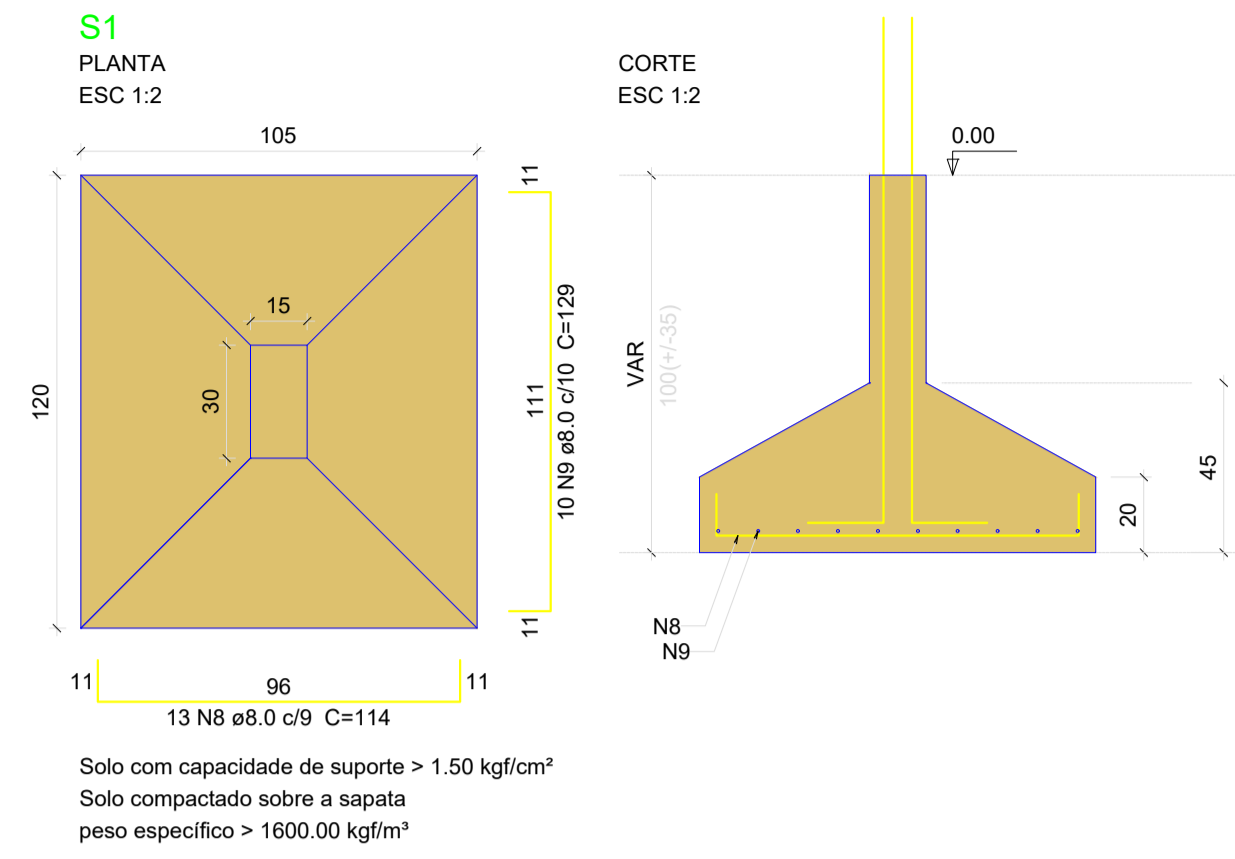
P1	P2	P6
P7	P26	S1
2xS2	S6	S7
3xS8		

AÇO	N	DIAM (mm)	QUANT	C.UNIT (cm)	C.TOTAL (cm)
CA60	1	5.0	8	77	616
	2	5.0	12	54	648
	3	5.0	14	24	336
	4	5.0	8	87	696
	5	5.0	12	64	768
	6	5.0	5	97	485
	7	5.0	8	69	552
CA50	8	8.0	13	114	1482
	9	8.0	10	129	1290
	10	8.0	28	144	4032
	11	8.0	37	154	5698
	12	8.0	14	139	1946
	13	8.0	14	134	1876
	14	8.0	12	149	1788
	15	8.0	48	159	7632
	16	8.0	45	174	7830
	17	10.0	4	147	588
	18	12.5	28	155	4340
	19	12.5	10	83	830

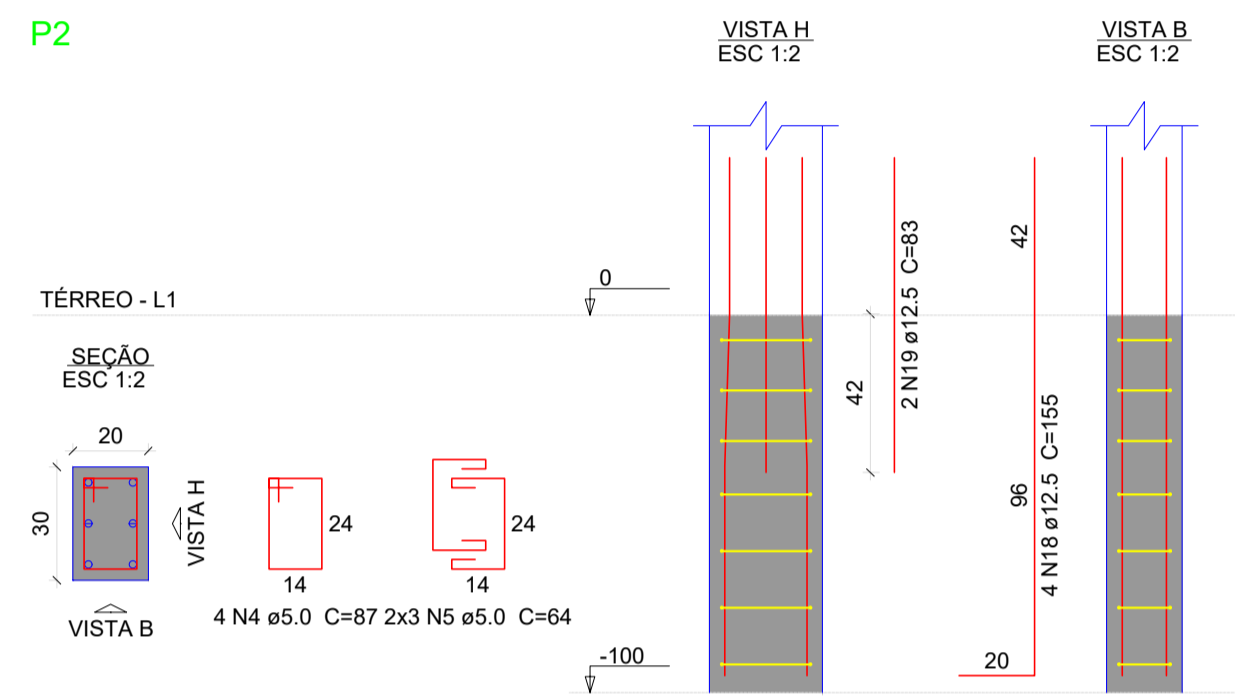
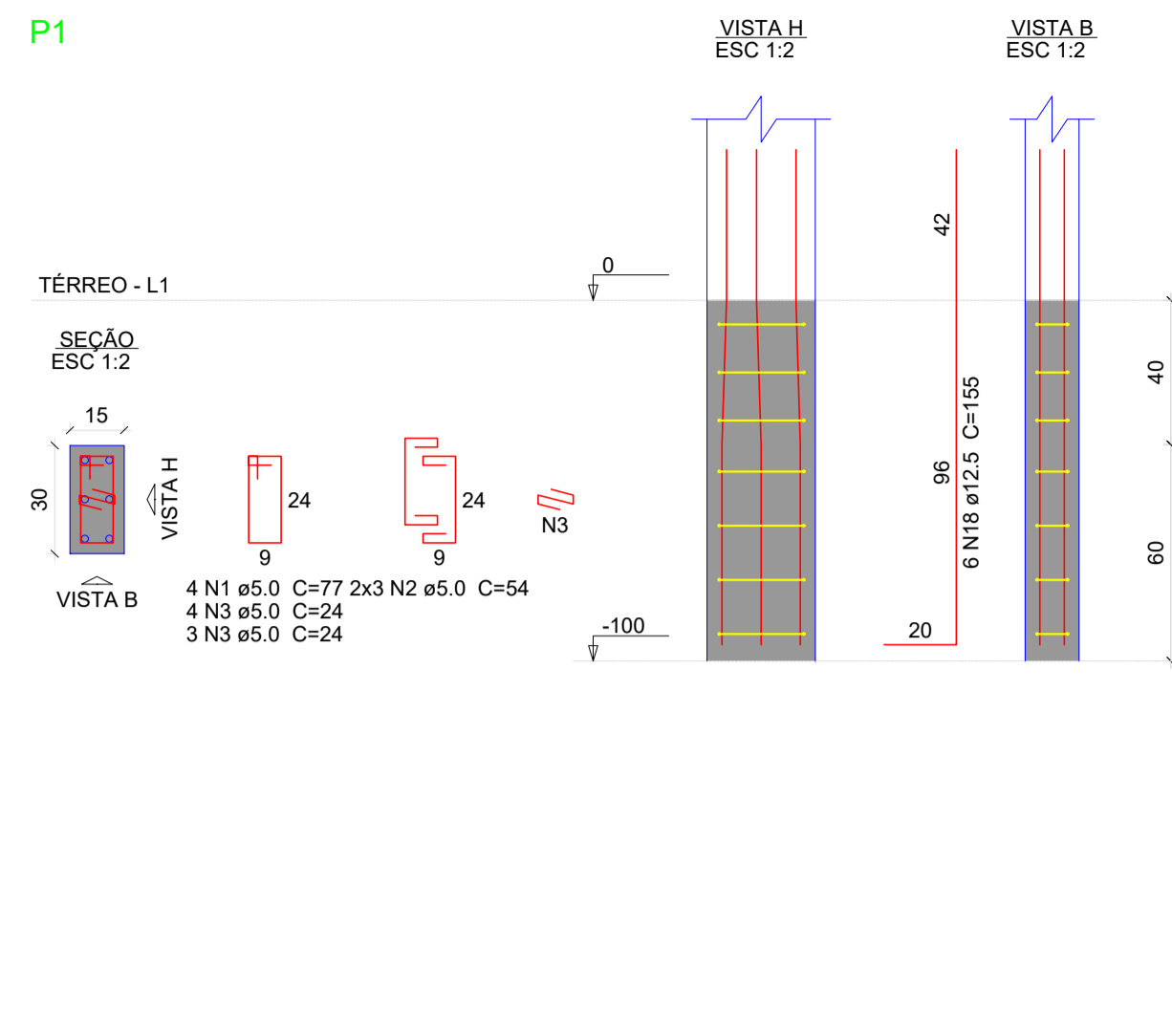
Resumo do aço

AÇO	DIAM (mm)	C.TOTAL (m)	PESO + 10 % (kg)
CA50	8.0	335.8	145.7
	10.0	5.9	4
	12.5	51.7	54.8
CA60	5.0	41.1	7
PESO TOTAL (kg)			
CA50	204.5		
CA60	7		

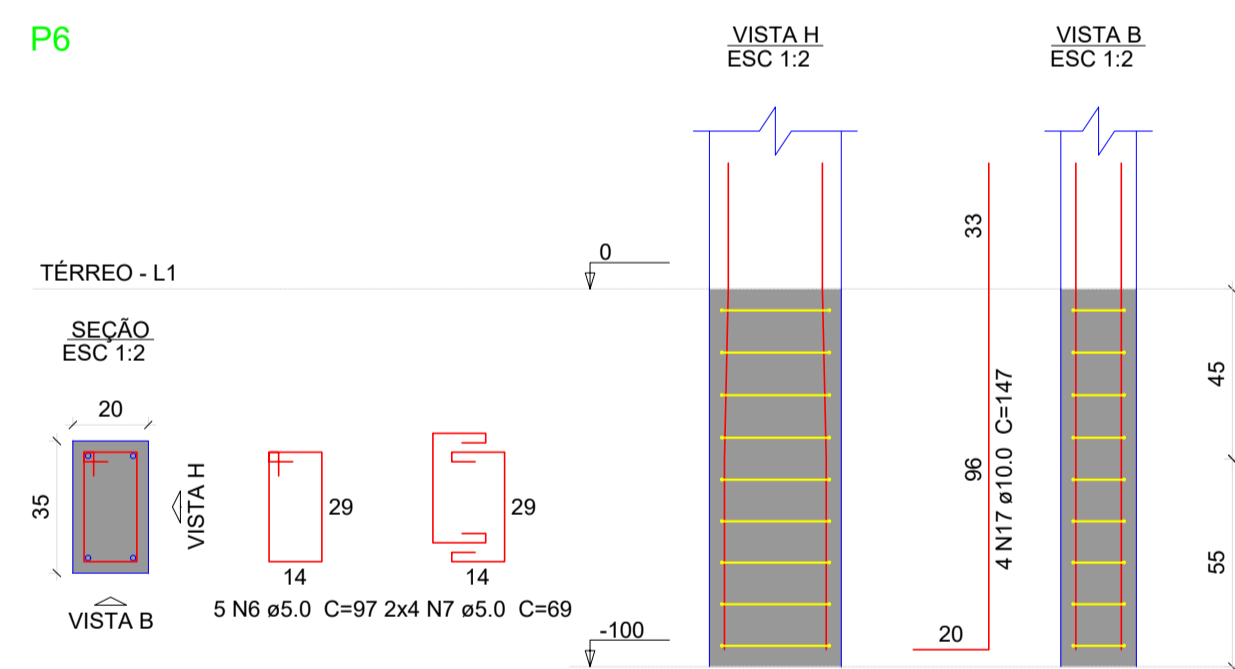
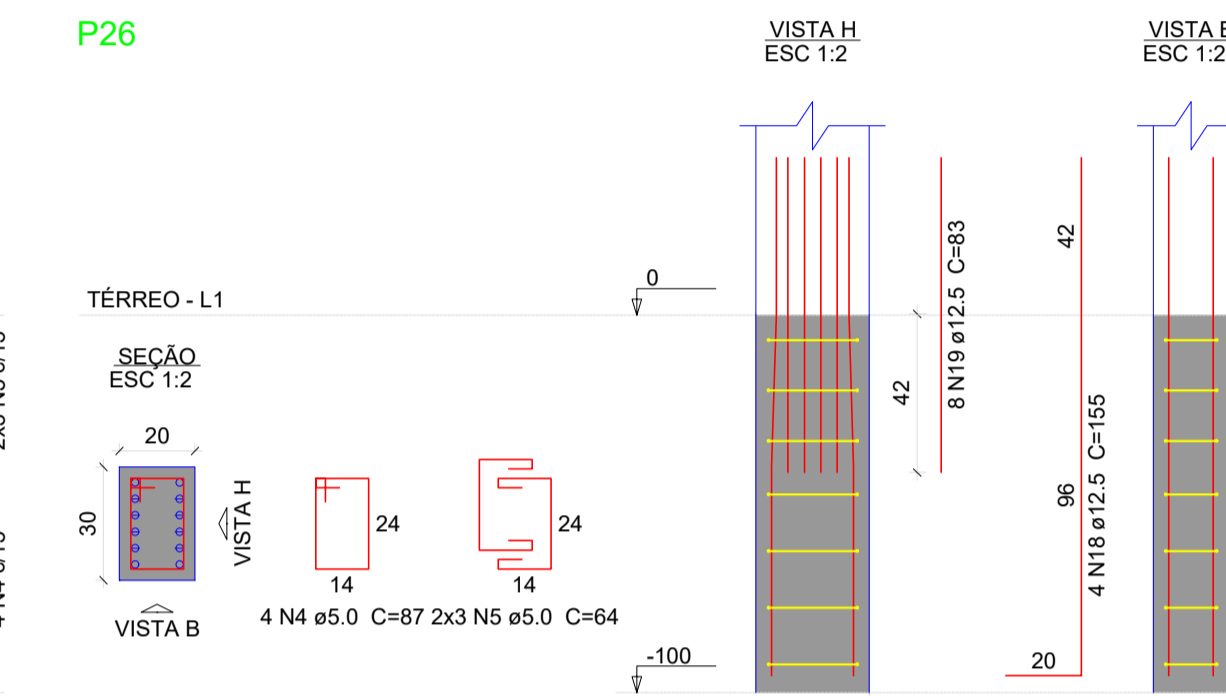
Volume de concreto (C-25) = 4.84 m³
 Volume de concreto (C-30) = 0.16 m³
 Área de forma = 11.83 m²



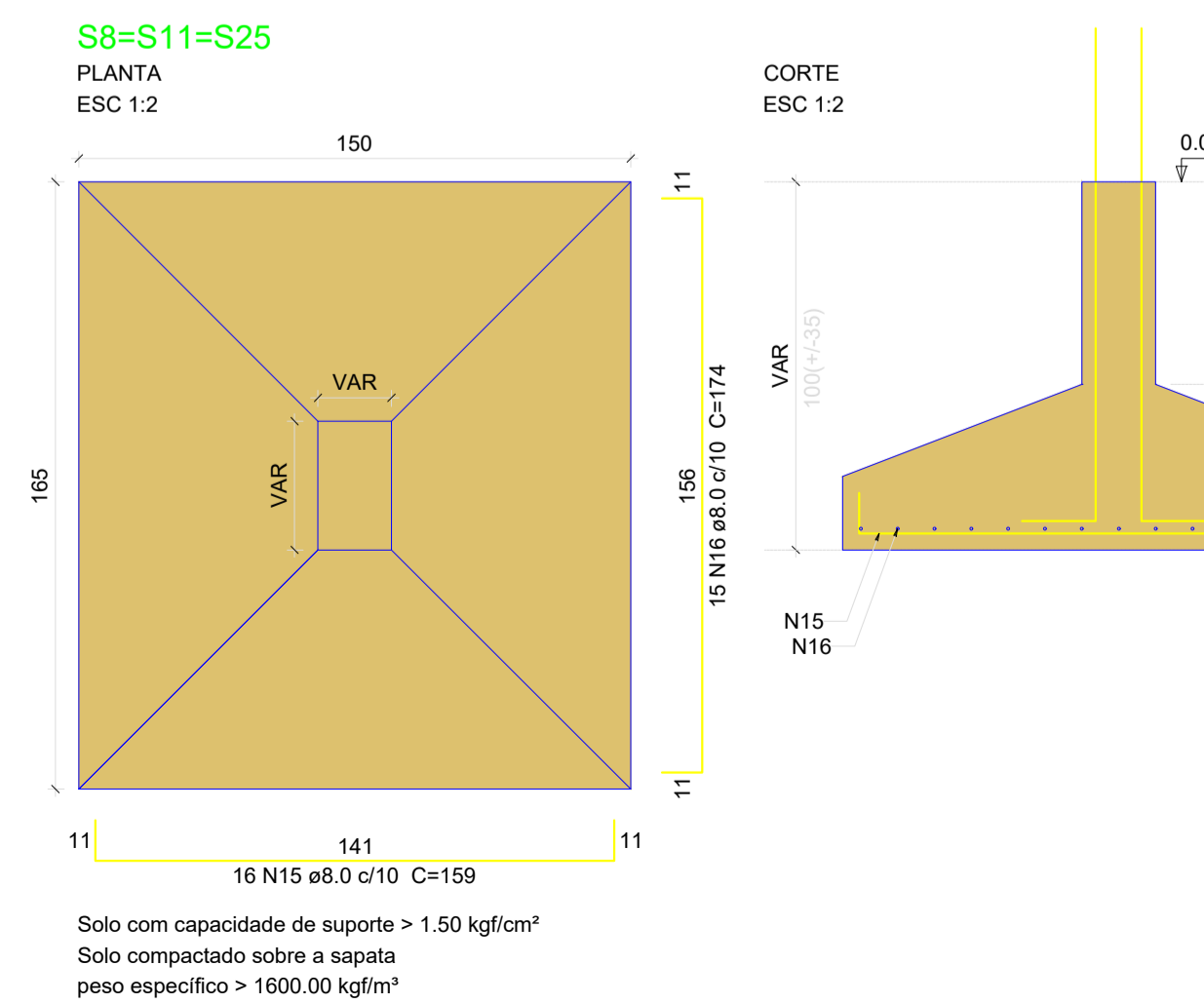
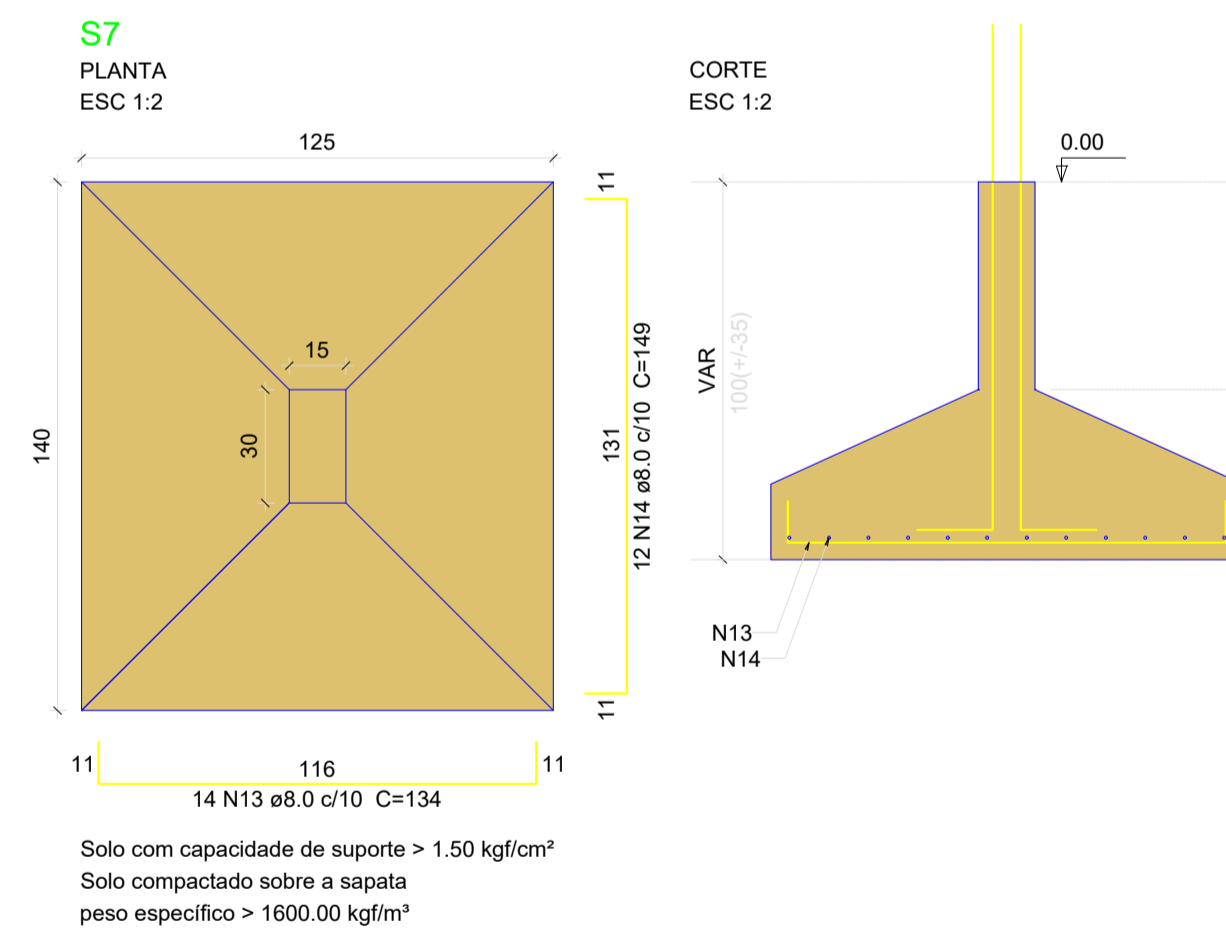
P1



P26

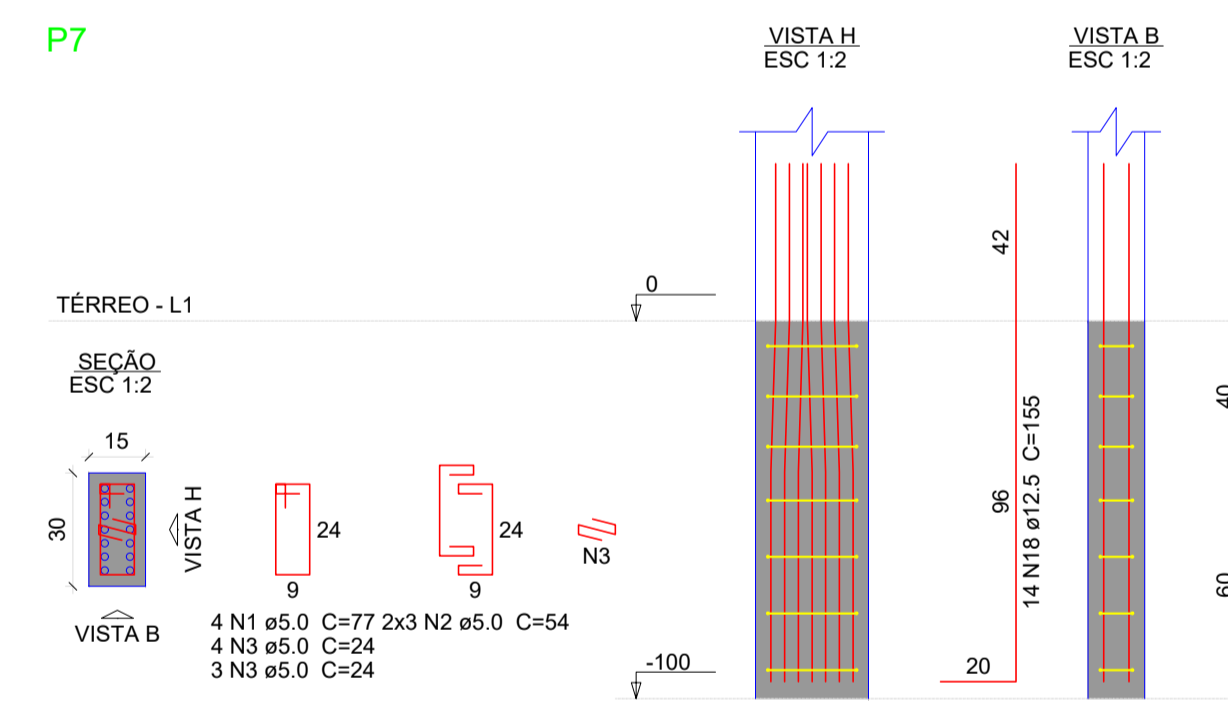


S7



P6

P7



ÁREA CONSTRUIDA: 300,28 m ²	LOCALIZAÇÃO DA OBRA: LINHA PITANGUEIRA TUNÁPOLIS - SC
ESCALA: INDICADA	TIPO DE OBRA: PROJETO ESTRUTURAL ESCOLA MUNICÍPIO DE TUNÁPOLIS
DATA: SET 2023	DESCRIÇÃO: DETALHAMENTO FUNDAÇÕES - 1
OBRA: AMPLIAÇÃO ESCOLAR	PROPRIETÁRIO: MUNICÍPIO DE TUNÁPOLIS / SC - CNP: 78.486.198/0001-62
	RESP. TÉCNICO: ENG. CIVIL BRUNA CAROLINA JACHINSKI - CREA 263013