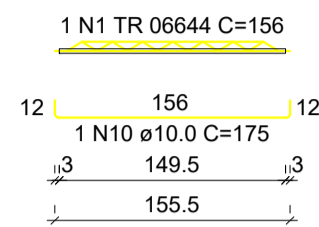




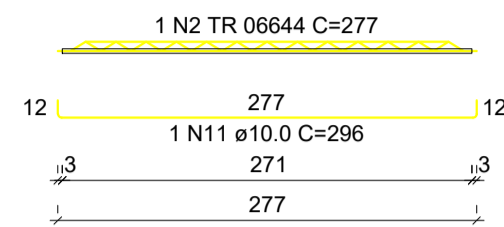
Recortar



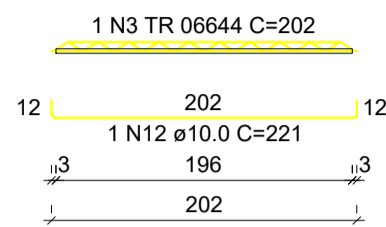
VT1a (7 unidades)
(L1)
ESC 1:50



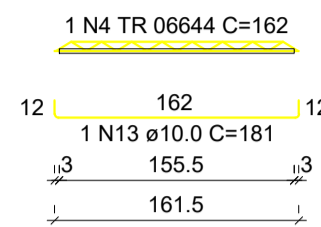
VT2a (9 unidades)
(L2)
ESC 1:50



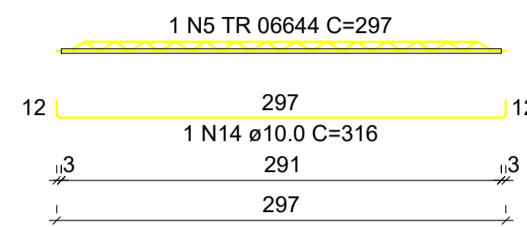
VT3a (7 unidades)
(L3)
ESC 1:50



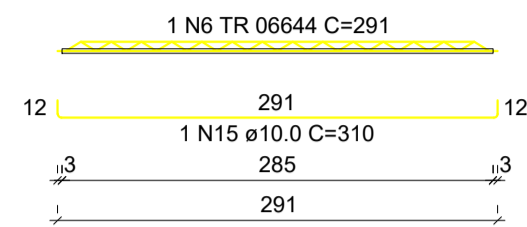
VT4a (9 unidades)
(L4)
ESC 1:50



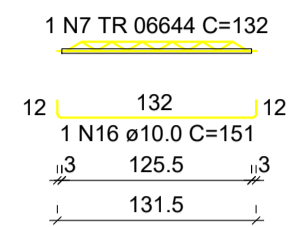
VT5a (6 unidades)
(L5)
ESC 1:50



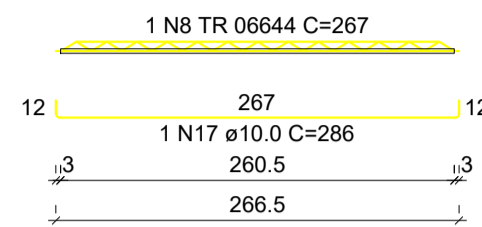
VT5b (1 unidades)
(L5)
ESC 1:50



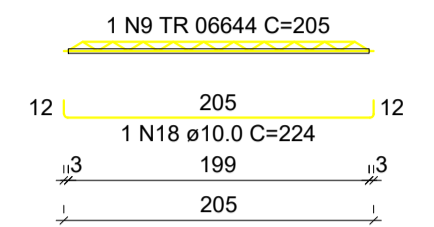
VT6a (9 unidades)
(L6)
ESC 1:50



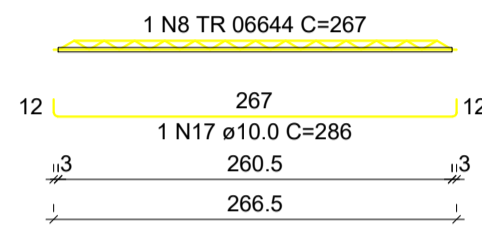
VT7a (9 unidades)
(L7)
ESC 1:50



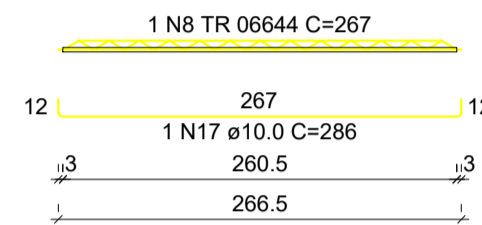
VT8a (6 unidades)
(L8)
ESC 1:50



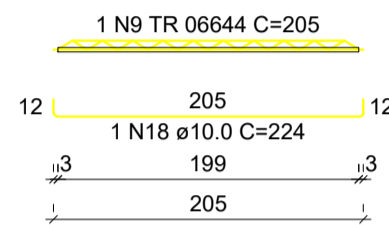
VT9a (9 unidades)
(L9)
ESC 1:50



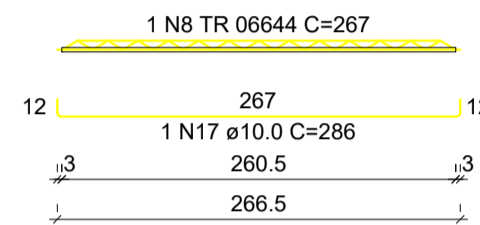
VT10a (9 unidades)
(L10)
ESC 1:50



VT11a (6 unidades)
(L11)
ESC 1:50



VT12a (9 unidades)
(L12)
ESC 1:50



RELAÇÃO DO AÇO

7xVT1a
9xVT4a
9xVT6a
9xVT9a
9xVT12a

9xVT2a
6xVT5a
9xVT7a
9xVT10a

7xVT3a
VT5b
6xVT8a
6xVT11a

AÇO	N	DIAM (mm)	QUANT	C.UNIT (cm)	C.TOTAL (cm)
CA60	1	TR 06644	7	156	1092
	2	TR 06644	9	277	2493
	3	TR 06644	7	202	1414
	4	TR 06644	9	162	1458
	5	TR 06644	6	297	1782
	6	TR 06644	1	291	291
	7	TR 06644	9	132	1188
	8	TR 06644	36	267	9612
	9	TR 06644	12	205	2460
CA50	10	10.0	7	175	1225
	11	10.0	9	296	2664
	12	10.0	7	221	1547
	13	10.0	9	181	1629
	14	10.0	6	316	1896
	15	10.0	1	310	310
	16	10.0	9	151	1359
	17	10.0	36	286	10296
	18	10.0	12	224	2688

RESUMO DO AÇO

AÇO	DIAM (mm)	C.TOTAL (m)	PESO + 10% (kg)
CA50	10.0	236.1	160.1
CA60	TR 06644	217.9	170.4
PESO TOTAL (kg)			
CA50			160.1
CA60			170.4

Volume de concreto (C-25) = 0.00 m³
Área de forma = 0.00 m²




RELAÇÃO DO AÇO

Volume de concreto (C-25) = 5.20 m³
Área de forma = 0.00 m²

Planta de vigotas pré-moldadas

escala 1:50



SEHNEM
ENGENHARIA

Sehnm Engenharia LTDA
CNPJ: 45.758.913/0001-00
CREA/SC 189648-6

Fone: (49) 98413 3214
E-mail: sehnmengenharia@gmail.com
Rua São José, 155 - Edifício Kliemann - Sala 01
Centro, Itapiranga-SC

Proprietário: **Município de Tunápolis - SC**
CNPJ: 78.486.198/0001-52

Assinatura: _____

Obra: Administrativo DMER Área a construir: 198,24 m²

Local/Cidade: Rua 25 de Julho, Centro, Tunápolis-SC

Projeto: ESTRUTURAL

Referência: Planta de Vigotas Térreo
Detalhamento das Vigotas Térreo

Prancha: **09 / 11**

Escala: Indicada | Data: Dezembro/2022 | Arquivo Digital: tunapolis_adm_dmer_rev02.dwg | Desenho: Tailor

Resp. Técnico: TAILOR SEHNEM - CREA/SC 154411-3 | Assinatura: _____