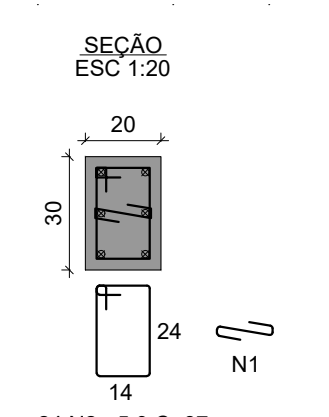




Recortar

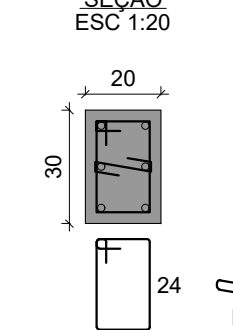


P5
BASE CAIXA DE ÁGUA - L4



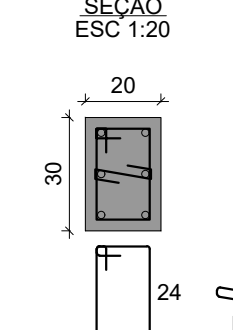
24 N2 ø5.0 C=87
24 N1 ø5.0 C=29

COBERTURA - L3



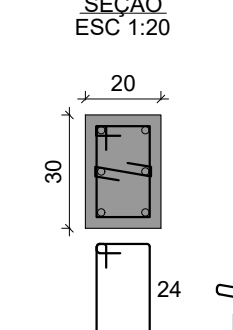
21 N2 ø5.0 C=87
21 N1 ø5.0 C=29

TÉRREO - L2



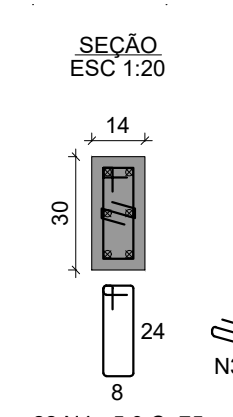
21 N2 ø5.0 C=87
21 N1 ø5.0 C=29

BALDRAME - L1



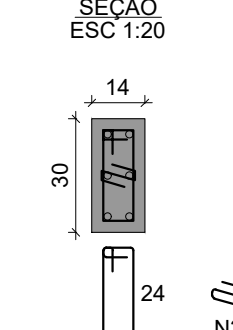
10 N2 ø5.0 C=87
10 N1 ø5.0 C=29

P11
COBERTURA - L3



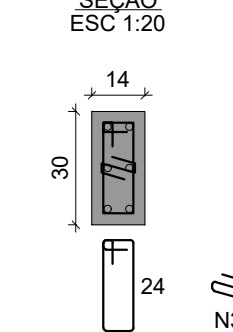
22 N4 ø5.0 C=75
22 N3 ø5.0 C=23

TÉRREO - L2



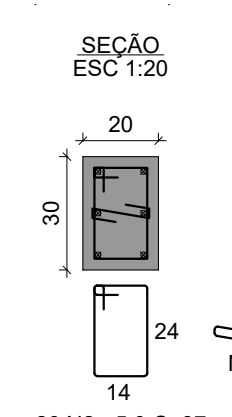
23 N4 ø5.0 C=75
23 N3 ø5.0 C=23

BALDRAME - L1



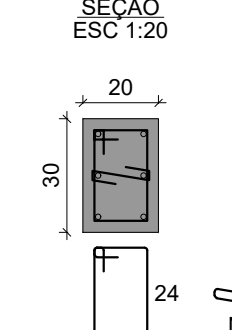
11 N4 ø5.0 C=75
11 N3 ø5.0 C=23

P12
COBERTURA - L3



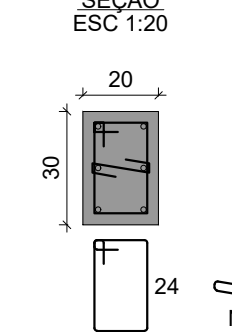
26 N2 ø5.0 C=87
26 N5 ø5.0 C=29

TÉRREO - L2



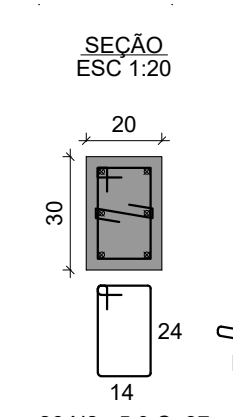
27 N2 ø5.0 C=87
27 N5 ø5.0 C=29

BALDRAME - L1



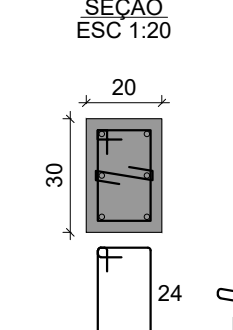
13 N2 ø5.0 C=87
13 N5 ø5.0 C=29

P13
COBERTURA - L3



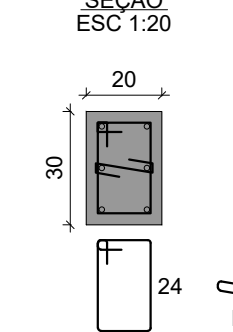
26 N2 ø5.0 C=87
26 N5 ø5.0 C=29

TÉRREO - L2



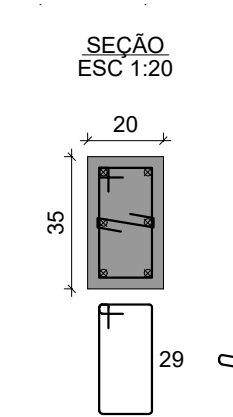
27 N2 ø5.0 C=87
27 N5 ø5.0 C=29

BALDRAME - L1



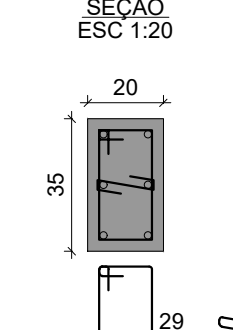
13 N2 ø5.0 C=87
13 N5 ø5.0 C=29

P14
COBERTURA - L3



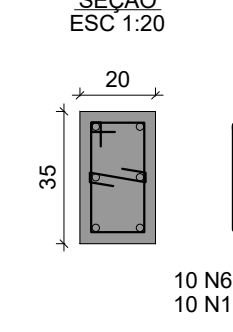
21 N6 ø5.0 C=97
21 N1 ø5.0 C=29

TÉRREO - L2



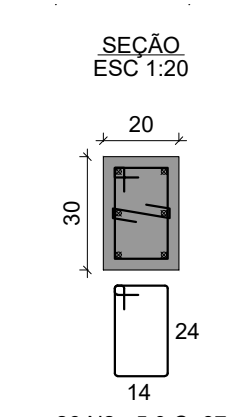
21 N6 ø5.0 C=97
21 N1 ø5.0 C=29

BALDRAME - L1



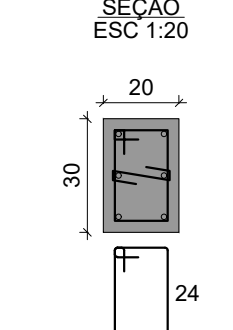
10 N6 ø5.0 C=97
10 N1 ø5.0 C=29

P15
COBERTURA - L3



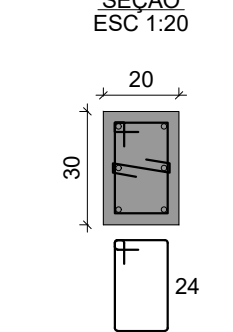
26 N2 ø5.0 C=87
26 N5 ø5.0 C=29

TÉRREO - L2



27 N2 ø5.0 C=87
27 N5 ø5.0 C=29

BALDRAME - L1



13 N2 ø5.0 C=87
13 N5 ø5.0 C=29

RELAÇÃO DO AÇO

AÇO	N	DIAM (mm)	QUANT	C.UNIT (cm)	C.TOTAL (cm)
CA60	1	5.0	128	29	3712
	2	5.0	274	87	23838
	3	5.0	56	23	1288
	4	5.0	56	75	4200
	5	5.0	198	29	5742
CA50	6	5.0	52	87	5044
	7	10.0	18	302	5436
	8	10.0	18	353	6354
	9	10.0	18	VAR	VAR
	10	12.5	6	357	2142
	11	12.5	6	352	2112
	12	12.5	18	362	6516
	13	12.5	18	VAR	VAR
	14	12.5	12	302	3624

RESUMO DO AÇO

AÇO	DIAM (mm)	C.TOTAL (m)	PESO + 10% (kg)
CA50	10.0	154.4	104.7
CA60	5.0	438.2	74.3

PESO TOTAL (kg)
CA50 297.5
CA60 74.3

Volume de concreto (C-25) = 2.83 m³
Área de forma = 48.00 m²

Projeto: **Sehnm Engenharia LTDA**
 CNPJ: 45.758.913/0001-00
 CREA/SC: 189648-6
 Fone: (49) 98413 3214
 E-mail: sehnemengenharia@gmail.com
 Rua São José, 155 - Edifício Klemann - Sala 01
 Centro, Itapiranga-SC

Proprietário: **Município de Tunápolis - SC**
 CNPJ: 78.486.198/0001-52

Assinatura: _____
 Área a construir: 198,24 m²

Local/Cidade: Rua 25 de Julho, Centro, Tunápolis-SC

Projeto: ESTRUTURAL

Referência: Pilares

Prancha: **04** / 11

Escala: Indcada | Data: Dezembro/2022 | Arquivo Digital: tunapolis_adm_dmer_rev02.dwg | Desenho: Talor
 Resp. Técnico: TALOR SEHNEM - CREA/SC 154411-3 | Assinatura: _____