

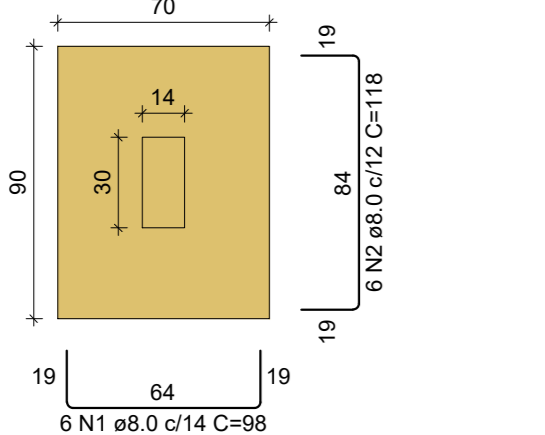


Recortar



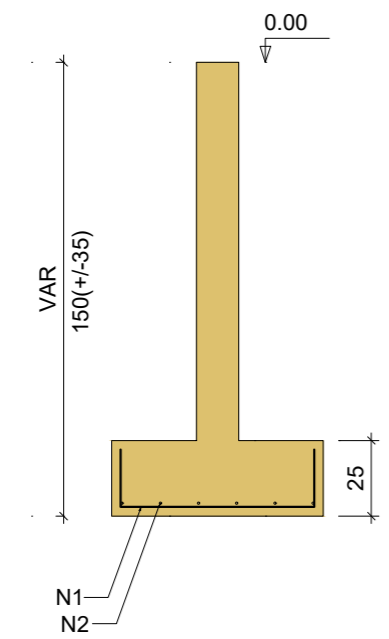
S1-S3

PLANTA  
ESC 1:25



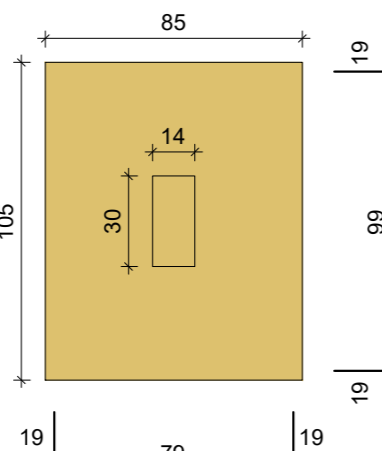
Solo com capacidade de suporte > 150.00 kN/m<sup>2</sup>  
Solo compactado sobre a sapata  
peso específico > 16.00 kN/m<sup>3</sup>

CORTE  
ESC 1:25



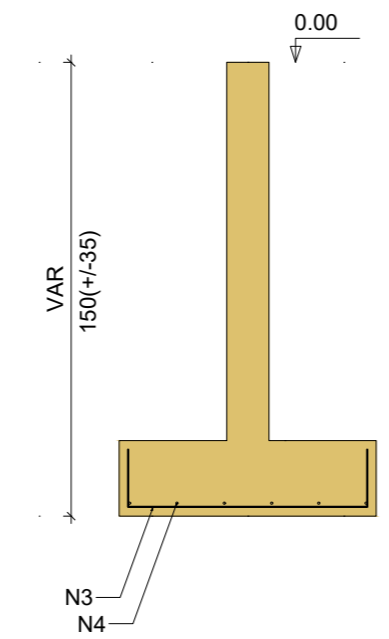
S2

PLANTA  
ESC 1:25



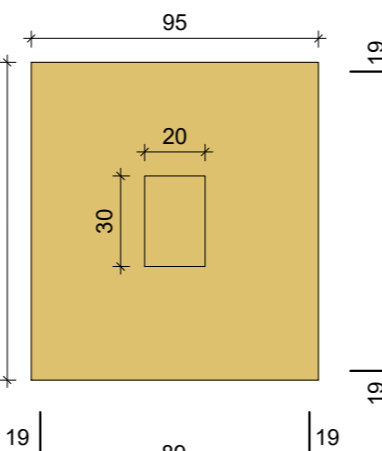
Solo com capacidade de suporte > 150.00 kN/m<sup>2</sup>  
Solo compactado sobre a sapata  
peso específico > 16.00 kN/m<sup>3</sup>

CORTE  
ESC 1:25



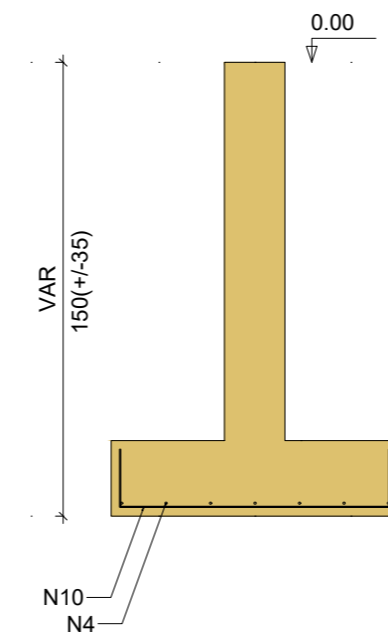
S4=S12=S13

PLANTA  
ESC 1:25



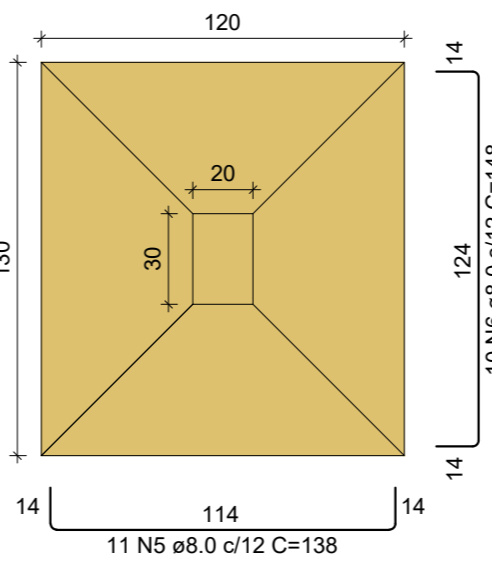
Solo com capacidade de suporte > 150.00 kN/m<sup>2</sup>  
Solo compactado sobre a sapata  
peso específico > 16.00 kN/m<sup>3</sup>

CORTE  
ESC 1:25



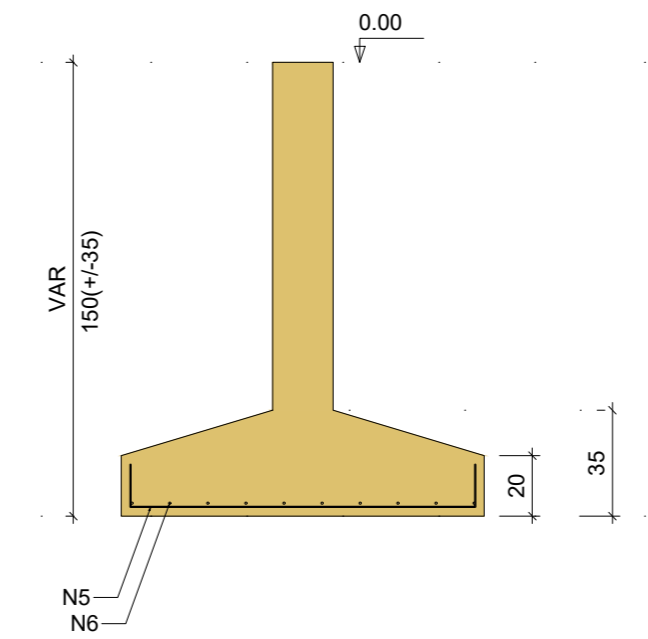
S5

PLANTA  
ESC 1:25



Solo com capacidade de suporte > 150.00 kN/m<sup>2</sup>  
Solo compactado sobre a sapata  
peso específico > 16.00 kN/m<sup>3</sup>

CORTE  
ESC 1:25



RELAÇÃO DO AÇO

| AÇO  | N  | DIAM (mm) | QUANT | C.UNIT (cm) | C.TOTAL (cm) |
|------|----|-----------|-------|-------------|--------------|
| CA50 | 1  | 8.0       | 12    | 98          | 1176         |
|      | 2  | 8.0       | 18    | 118         | 2124         |
|      | 3  | 8.0       | 15    | 113         | 1695         |
|      | 4  | 8.0       | 27    | 133         | 3591         |
|      | 5  | 8.0       | 27    | 138         | 3726         |
|      | 6  | 8.0       | 36    | 148         | 5664         |
|      | 7  | 8.0       | 10    | 133         | 1330         |
|      | 8  | 8.0       | 10    | 143         | 1430         |
|      | 9  | 8.0       | 24    | 158         | 3792         |
|      | 10 | 8.0       | 36    | 123         | 4428         |
|      | 11 | 8.0       | 7     | 103         | 721          |
|      | 12 | 8.0       | 18    | 123         | 2214         |
|      | 13 | 8.0       | 6     | 108         | 648          |

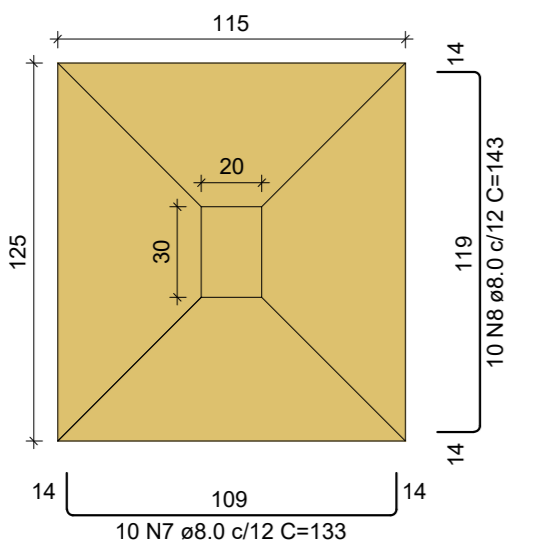
RESUMO DO AÇO

| AÇO             | DIAM (mm) | C.TOTAL (m) | PESO + 10% (kg) |
|-----------------|-----------|-------------|-----------------|
| CA50            | 8.0       | 325         | 141.1           |
| PESO TOTAL (kg) |           |             |                 |
| CA50            |           | 141.1       |                 |

Volume de concreto (C-25) = 4.27 m<sup>3</sup>  
Área de forma = 14.07 m<sup>2</sup>

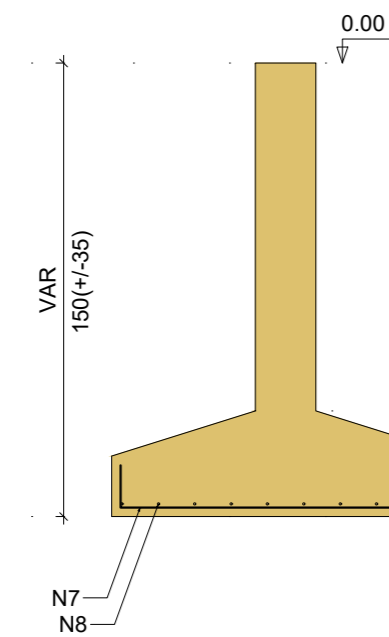
S6

PLANTA  
ESC 1:25



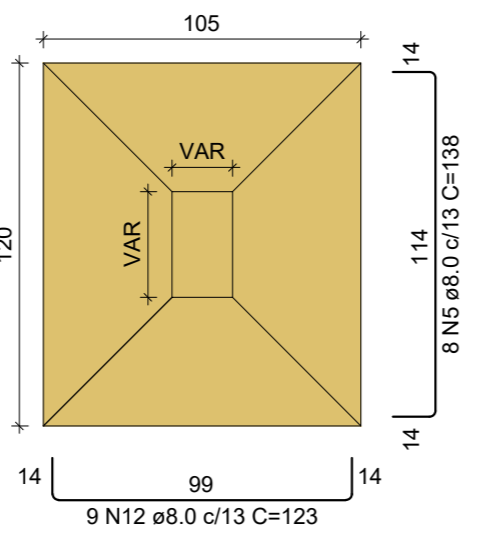
Solo com capacidade de suporte > 150.00 kN/m<sup>2</sup>  
Solo compactado sobre a sapata  
peso específico > 16.00 kN/m<sup>3</sup>

CORTE  
ESC 1:25



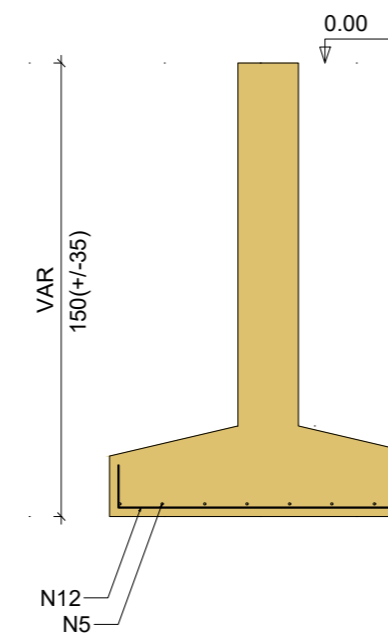
S7-S14

PLANTA  
ESC 1:25



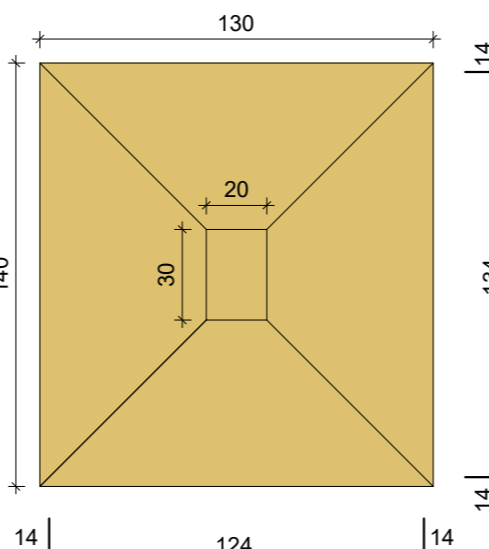
Solo com capacidade de suporte > 150.00 kN/m<sup>2</sup>  
Solo compactado sobre a sapata  
peso específico > 16.00 kN/m<sup>3</sup>

CORTE  
ESC 1:25



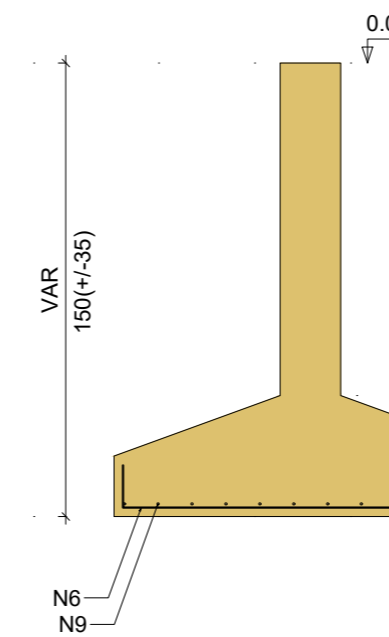
S8-S9

PLANTA  
ESC 1:25



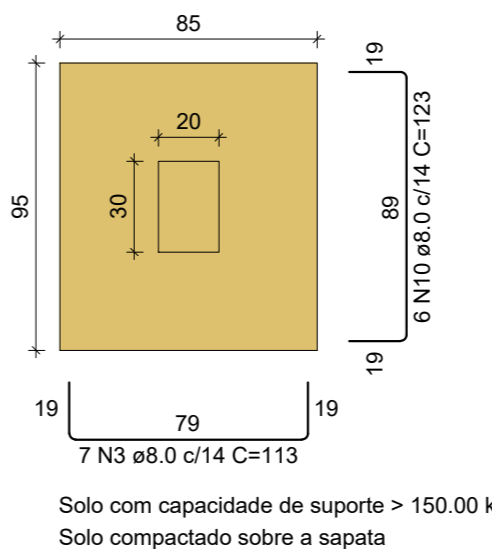
Solo com capacidade de suporte > 150.00 kN/m<sup>2</sup>  
Solo compactado sobre a sapata  
peso específico > 16.00 kN/m<sup>3</sup>

CORTE  
ESC 1:25



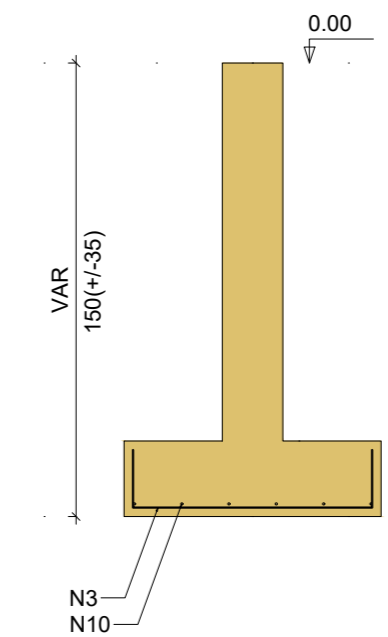
S10

PLANTA  
ESC 1:25



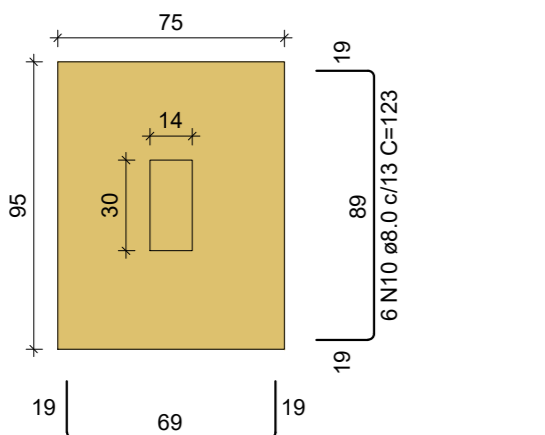
Solo com capacidade de suporte > 150.00 kN/m<sup>2</sup>  
Solo compactado sobre a sapata  
peso específico > 16.00 kN/m<sup>3</sup>

CORTE  
ESC 1:25



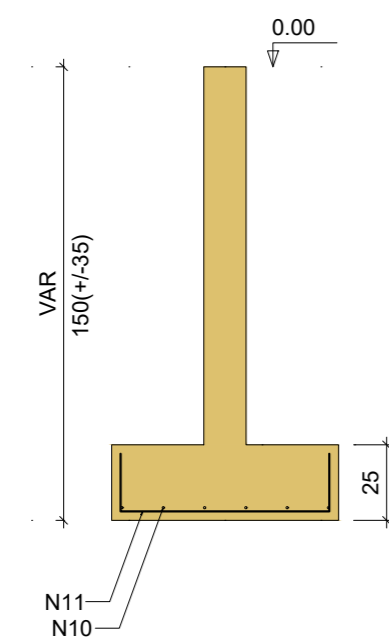
S11

PLANTA  
ESC 1:25



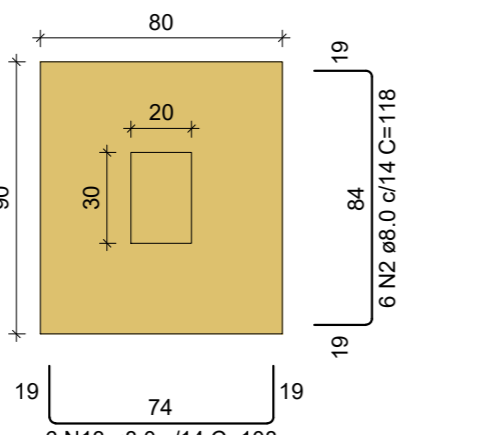
Solo com capacidade de suporte > 150.00 kN/m<sup>2</sup>  
Solo compactado sobre a sapata  
peso específico > 16.00 kN/m<sup>3</sup>

CORTE  
ESC 1:25



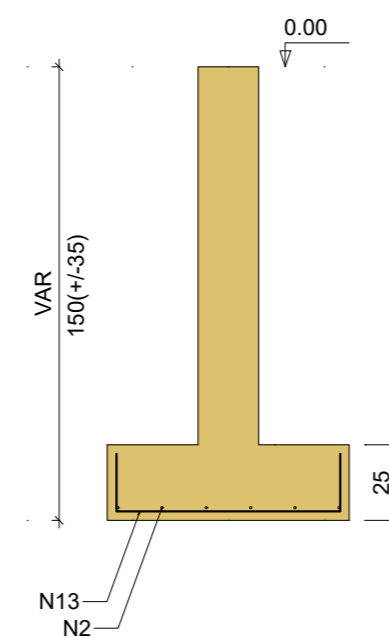
S15

PLANTA  
ESC 1:25



Solo com capacidade de suporte > 150.00 kN/m<sup>2</sup>  
Solo compactado sobre a sapata  
peso específico > 16.00 kN/m<sup>3</sup>

CORTE  
ESC 1:25



Projeto:  **Sehnem Engenharia LTDA**  
 CNPJ: 45.758.913/0001-00  
 CREA/SC: 189648-6  
 Fone: (49) 98413 3214  
 E-mail: sehnemengenharia@gmail.com  
 Rua São José, 155 - Edifício Klemann - Sala 01  
 Centro, Itapiranga-SC

Proprietário: Município de Tunápolis - SC  
 CNPJ: 78.486.198/0001-52

Assinatura: \_\_\_\_\_  
 Área a construir: 198,24 m<sup>2</sup>

Obra: Administrativo DMER

Local/Cidade: Rua 25 de Julho, Centro, Tunápolis-SC

Projeto: ESTRUTURAL

Referência: Sapatas

Prancha: **02** / 11

Escala: Indicada Data: Dezembro/2022 Arquivo Digital: tunapolis\_adm\_dmer\_rev02.dwg Desenho: Talior  
 Resp. Técnico: TALIOR SEHNEM - CREA/SC 154411-3 Assinatura: \_\_\_\_\_