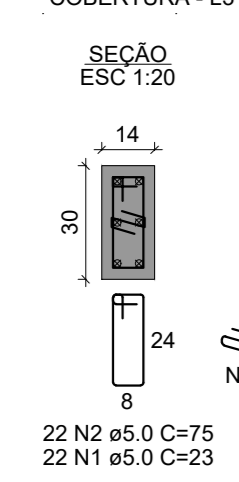




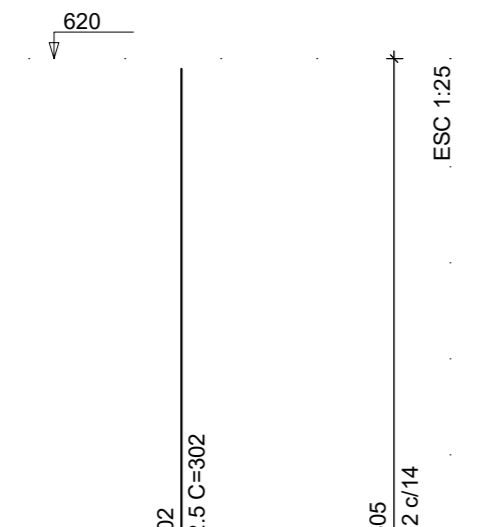
Recortar



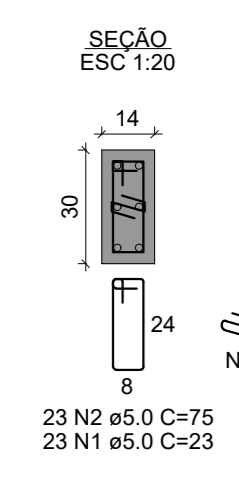
P1 COBERTURA - L3



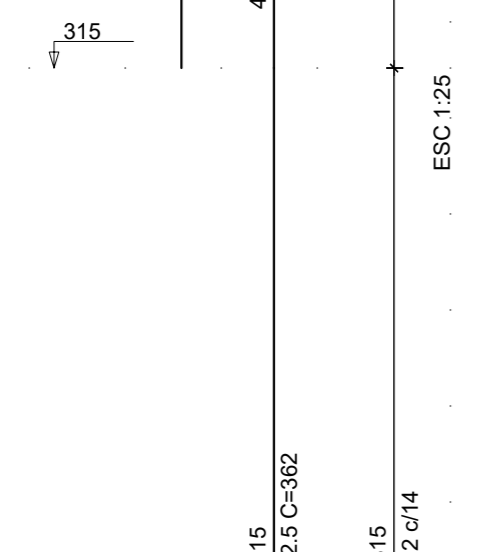
22 N2 ø5.0 C=75  
22 N1 ø5.0 C=23



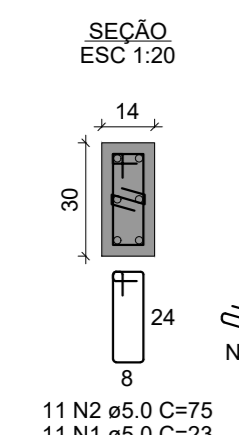
TÉRREO - L2



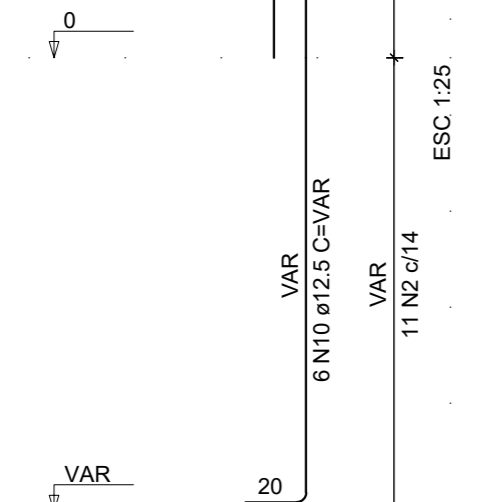
23 N2 ø5.0 C=75  
23 N1 ø5.0 C=23



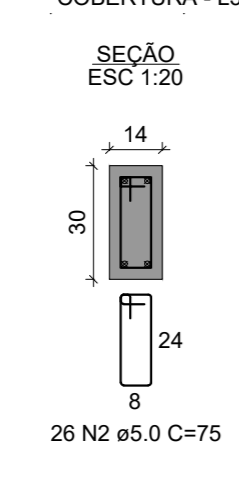
BALDRAME - L1



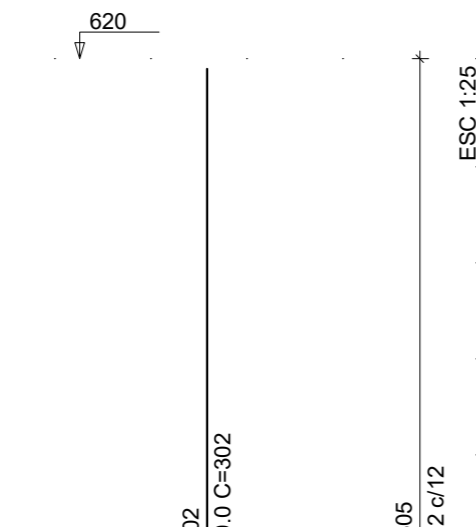
11 N2 ø5.0 C=75  
11 N1 ø5.0 C=23



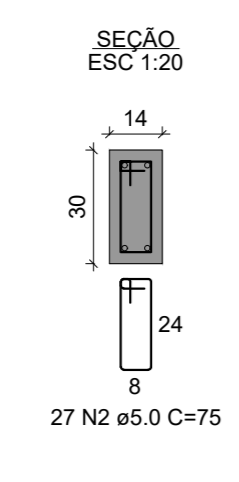
P2 COBERTURA - L3



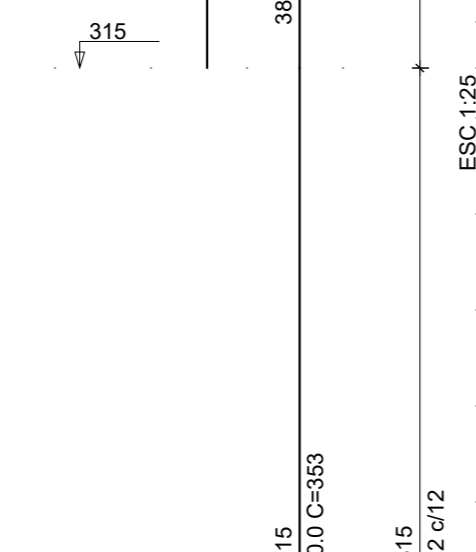
26 N2 ø5.0 C=75



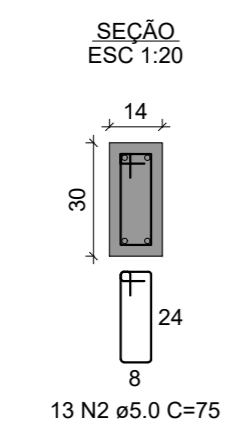
TÉRREO - L2



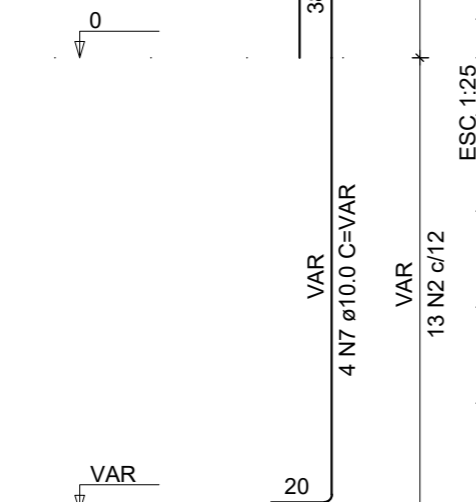
27 N2 ø5.0 C=75



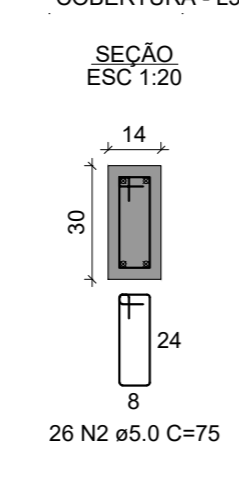
BALDRAME - L1



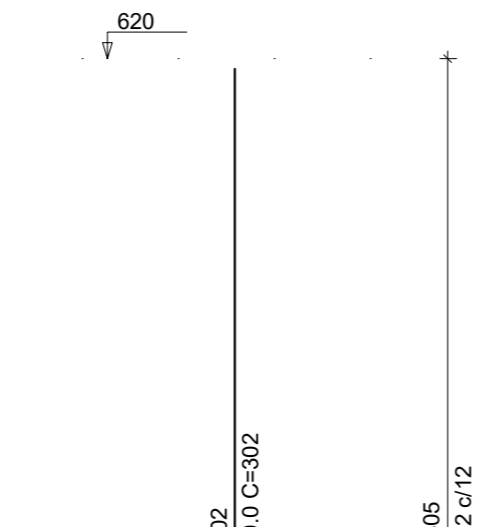
13 N2 ø5.0 C=75



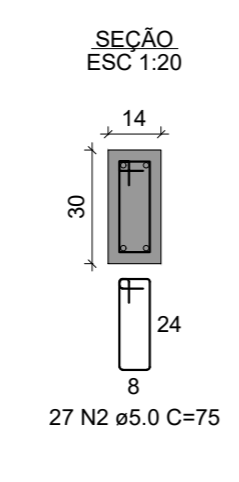
P3 COBERTURA - L3



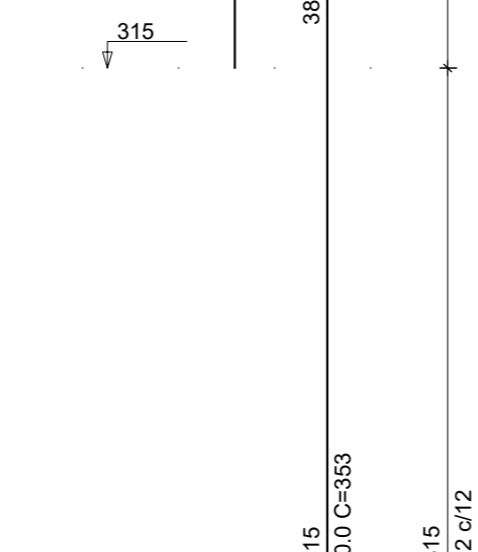
26 N2 ø5.0 C=75



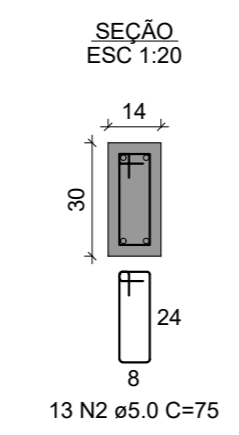
TÉRREO - L2



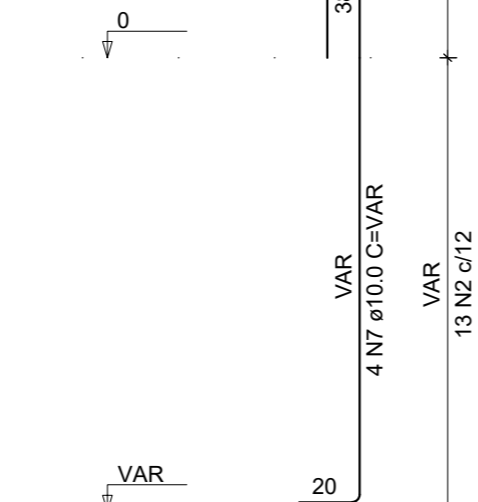
27 N2 ø5.0 C=75



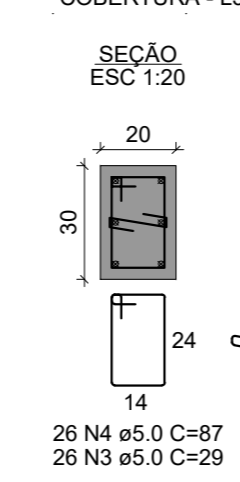
BALDRAME - L1



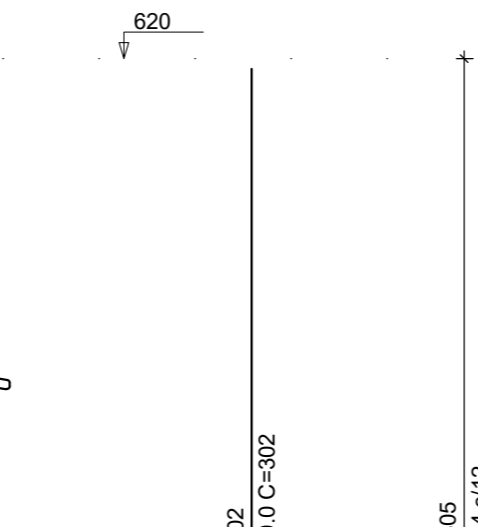
13 N2 ø5.0 C=75



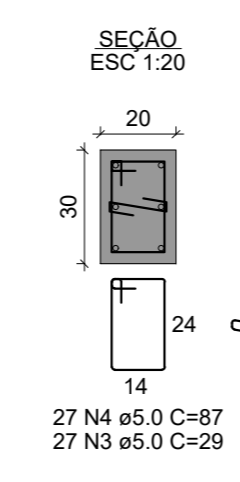
P4 COBERTURA - L3



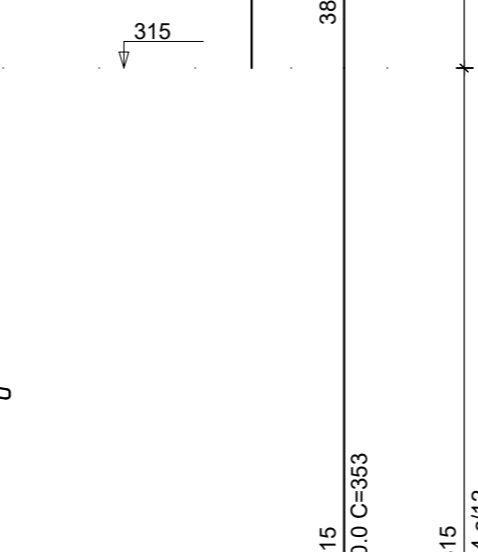
26 N4 ø5.0 C=87  
26 N3 ø5.0 C=29



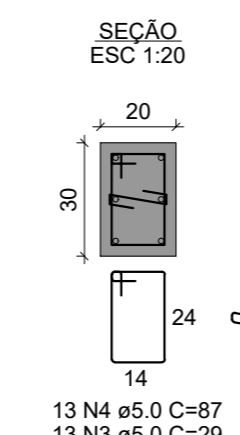
TÉRREO - L2



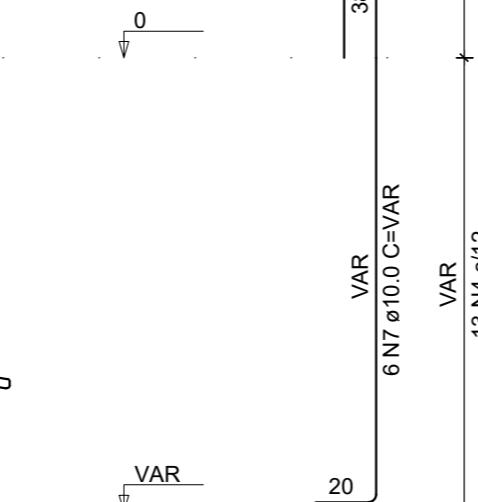
27 N4 ø5.0 C=87  
27 N3 ø5.0 C=29



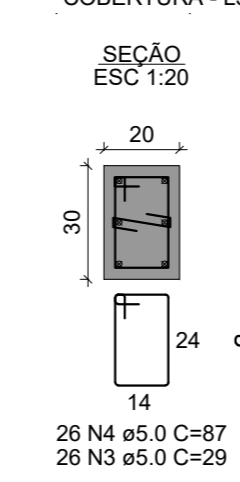
BALDRAME - L1



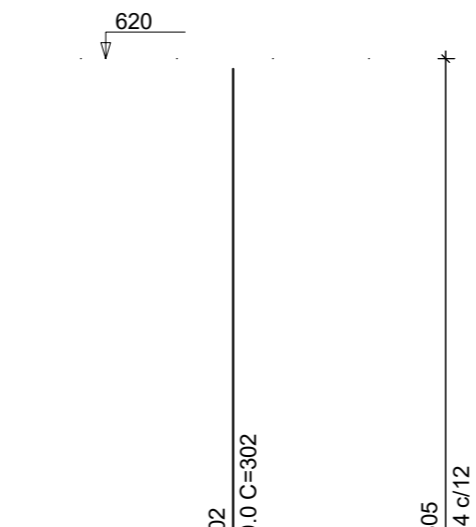
13 N4 ø5.0 C=87  
13 N3 ø5.0 C=29



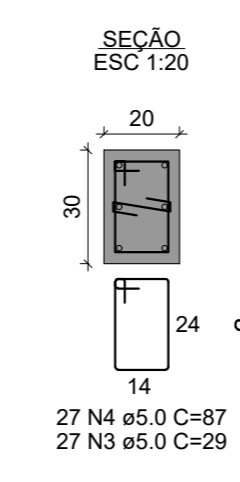
P7 COBERTURA - L3



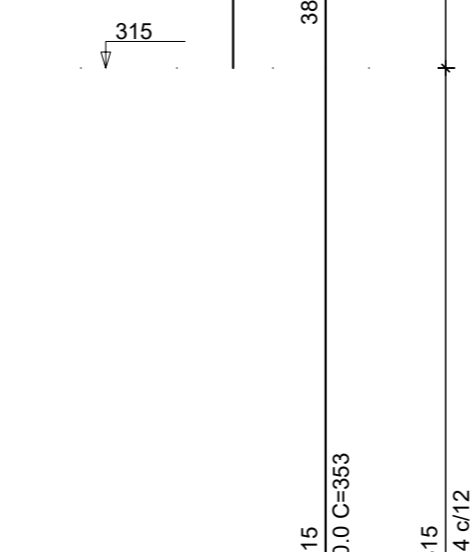
26 N4 ø5.0 C=87  
26 N3 ø5.0 C=29



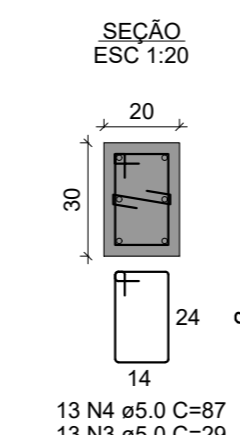
TÉRREO - L2



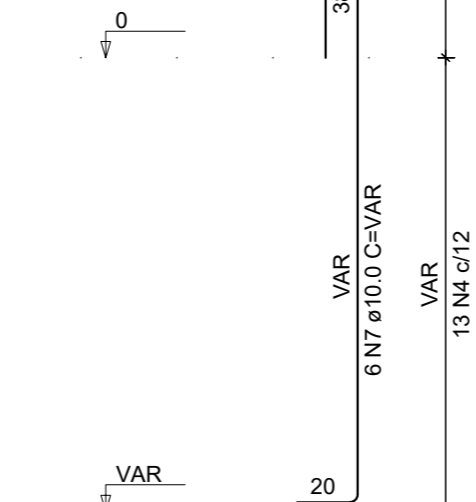
27 N4 ø5.0 C=87  
27 N3 ø5.0 C=29



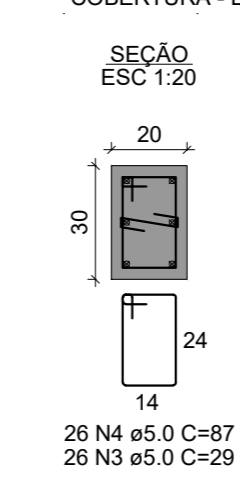
BALDRAME - L1



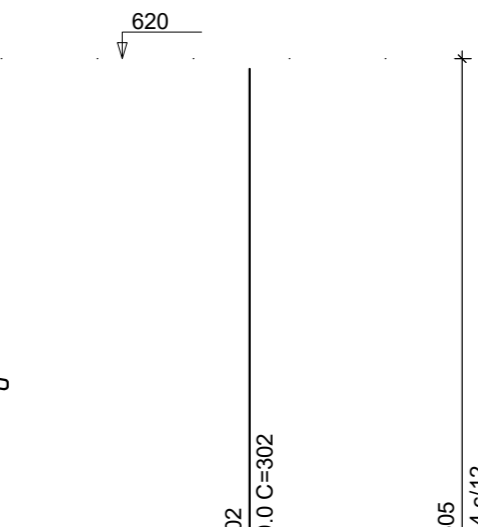
13 N4 ø5.0 C=87  
13 N3 ø5.0 C=29



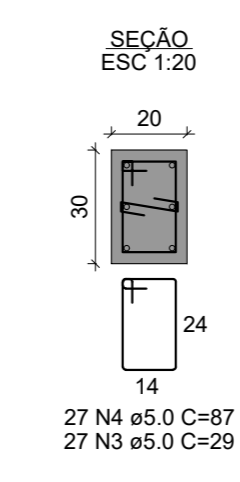
P10 COBERTURA - L3



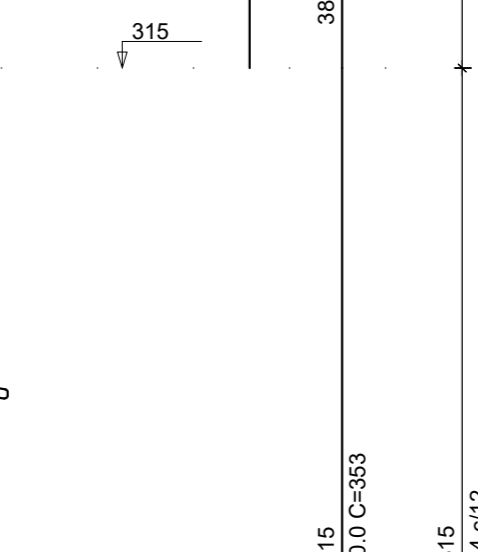
26 N4 ø5.0 C=87  
26 N3 ø5.0 C=29



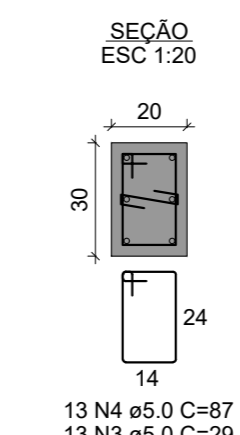
TÉRREO - L2



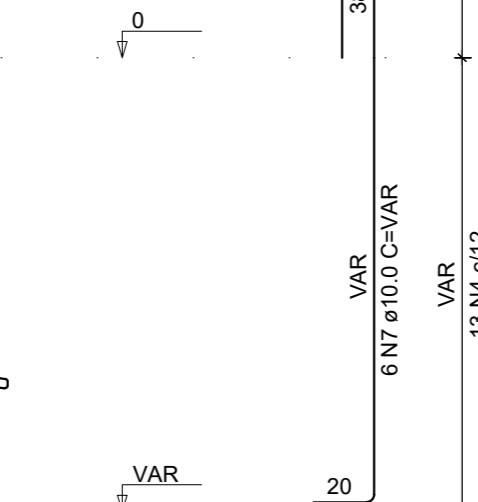
27 N4 ø5.0 C=87  
27 N3 ø5.0 C=29



BALDRAME - L1



13 N4 ø5.0 C=87  
13 N3 ø5.0 C=29



RELAÇÃO DO AÇO

AÇO	N	DIAM (mm)	QUANT	C.UNIT (cm)	C.TOTAL (cm)
CA60	1	5.0	56	23	1288
	2	5.0	188	75	14100
	3	5.0	198	29	5742
	4	5.0	188	87	17226
	5	10.0	26	302	7852
	6	10.0	26	353	9178
	7	10.0	26	VAR	VAR
	8	12.5	6	302	1812
	9	12.5	6	362	2172
	10			6	VAR

RESUMO DO AÇO

AÇO	DIAM (mm)	C.TOTAL (m)	PESO + 10% (kg)
CA50	10.0	223.1	151.3
CA60	5.0	52.5	56.6
CA60	5.0	383.6	65
<b>PESO TOTAL (kg)</b>			
CA50		206.9	
CA60		65	

Volume de concreto (C-25) = 2.28 m³  
Área de forma = 41.97 m²

Projeto: **Sehнем Engenharia LTDA**  
 CNPJ: 45.758.913/0001-00  
 Fone: (49) 98413 3214  
 E-mail: sehнемengenharia@gmail.com  
 Rua São José, 155 - Edifício Klemann - Sala 01  
 Centro, Itapiranga-SC

Proprietário: **Município de Tunápolis - SC**  
 CNPJ: 78.486.198/0001-52

Assinatura: \_\_\_\_\_

Obra: **Administrativo DMER** Área a construir: 198,24 m²

Local/Cidade: **Rua 25 de Julho, Centro, Tunápolis-SC**

Projeto: **ESTRUTURAL**

Referência: Pilares

Prancha: **03 / 11**

Escala: **Indicada** Data: **Dezembro/2022** Arquivo Digital: **tunapolis\_adm\_dmer\_rev02.dwg** Desenhista: **Talior**

Resp. Técnico: **TALIOR SEHNEM - CREA/SC 154411-3** Assinatura: \_\_\_\_\_