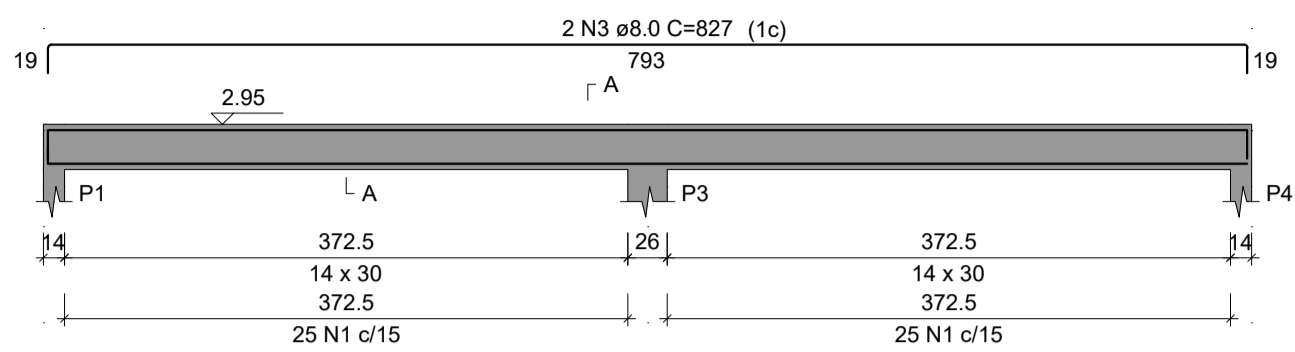




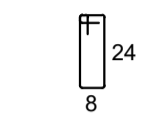
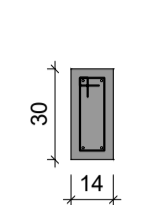
Recortar



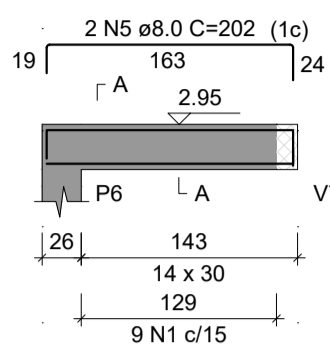
V1
ESC 1:50



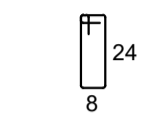
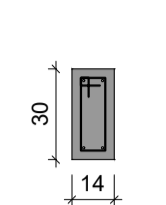
SEÇÃO A-A
ESC 1:25



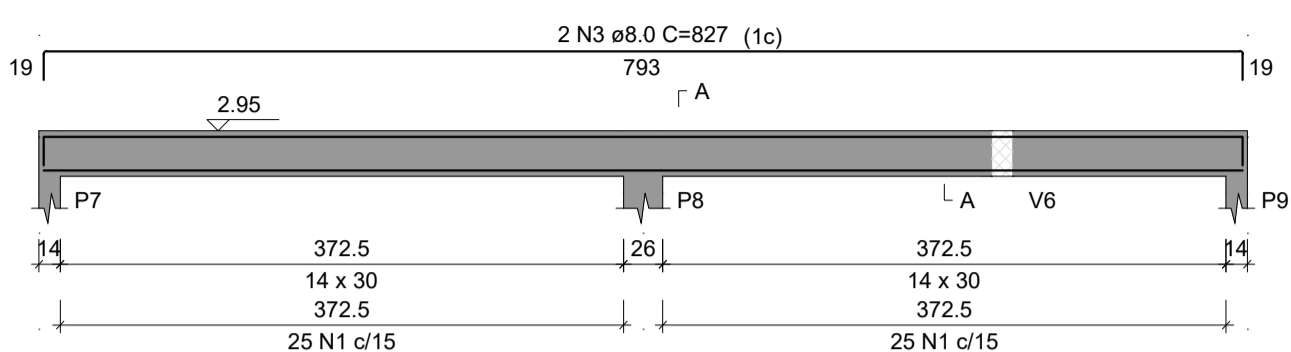
V2
ESC 1:50



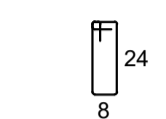
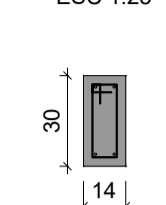
SEÇÃO A-A
ESC 1:25



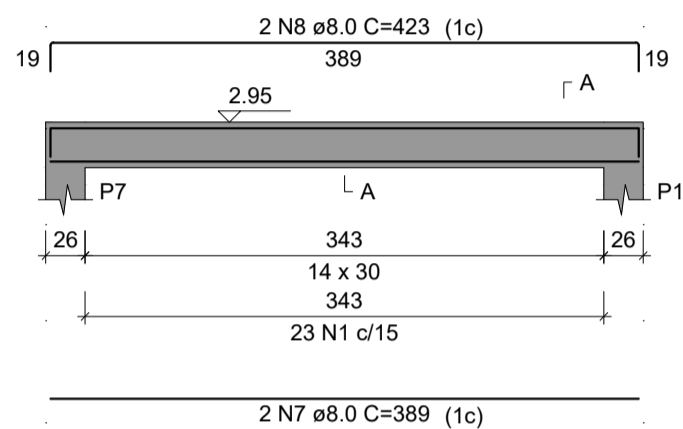
V3
ESC 1:50



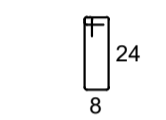
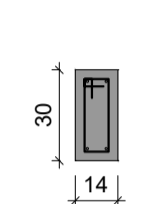
SEÇÃO A-A
ESC 1:25



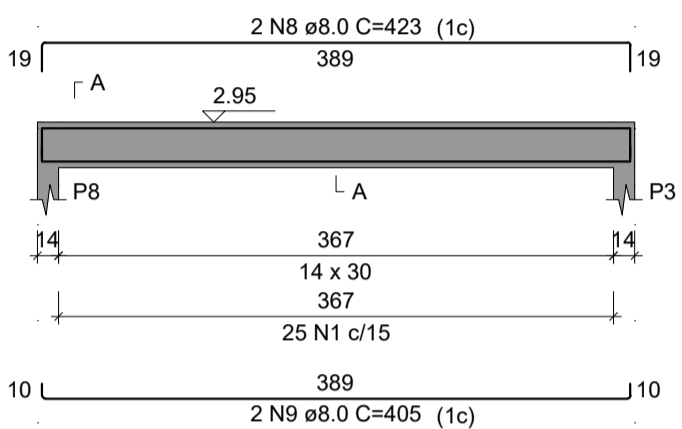
V4
ESC 1:50



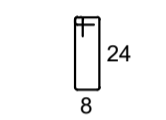
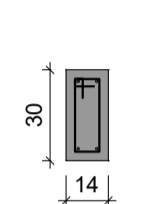
SEÇÃO A-A
ESC 1:25



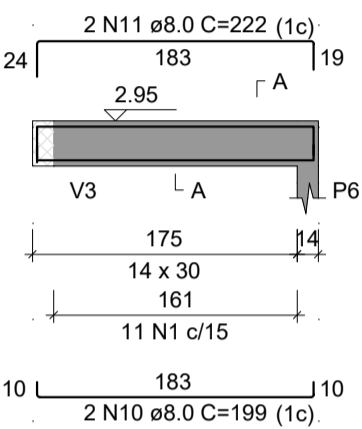
V5
ESC 1:50



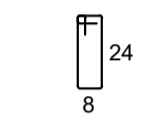
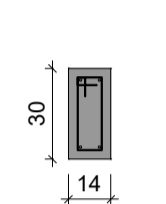
SEÇÃO A-A
ESC 1:25



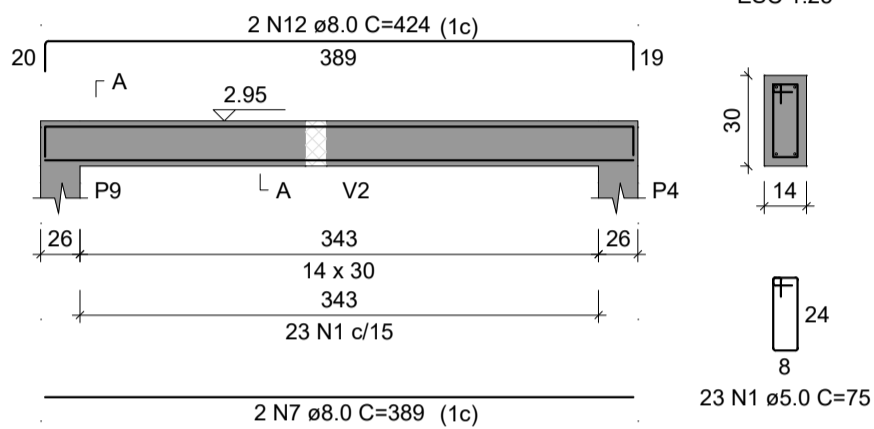
V6
ESC 1:50



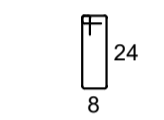
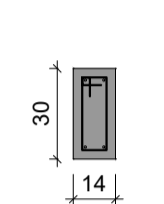
SEÇÃO A-A
ESC 1:25



V7
ESC 1:50



SEÇÃO A-A
ESC 1:25



RELAÇÃO DO AÇO

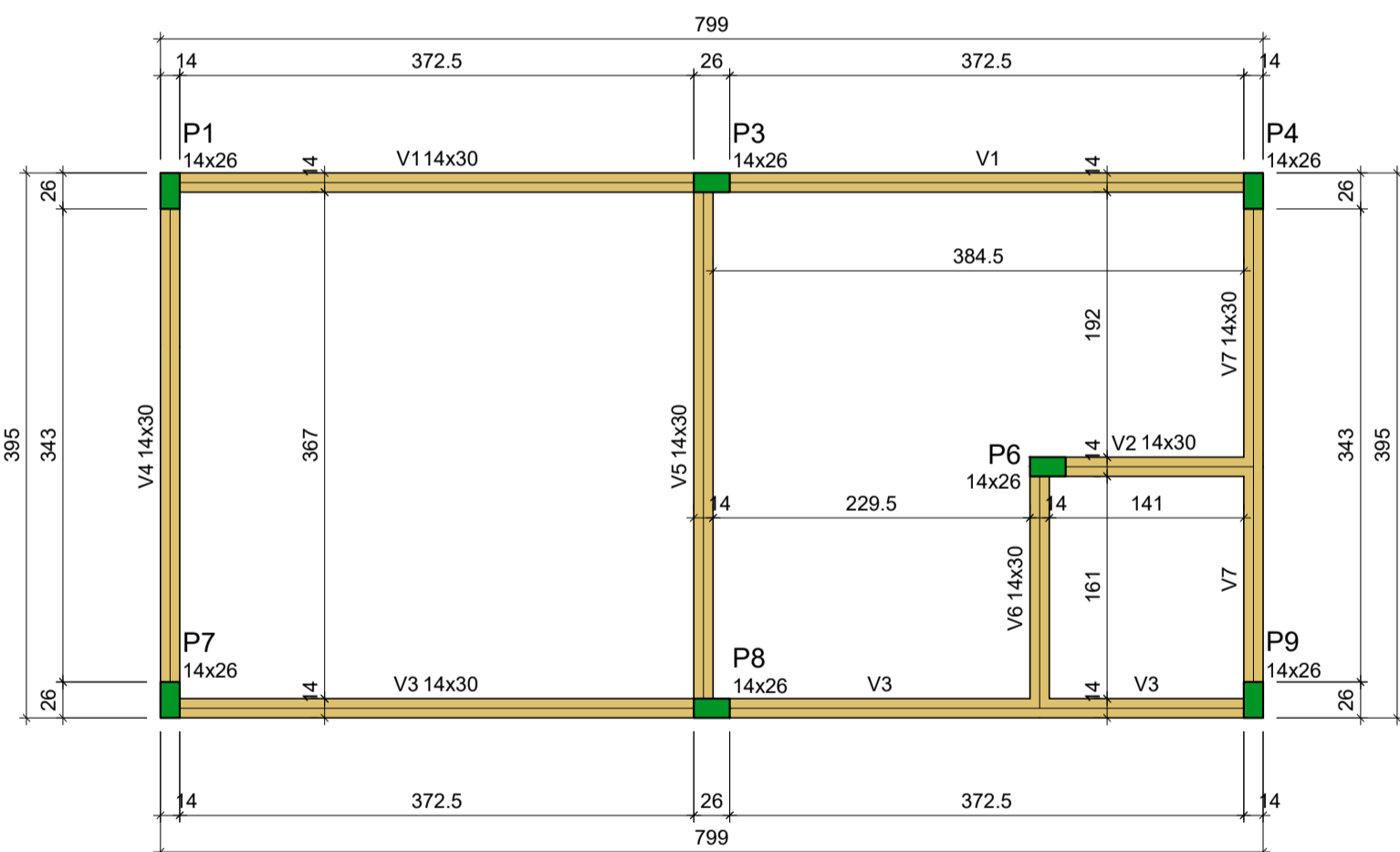
AÇO	N	DIAM (mm)	QUANT	C.UNIT (cm)	C.TOTAL (cm)
CA60	1	5.0	191	75	14325
CA50	2	8.0	2	801	1602
	3	8.0	4	827	3308
	4	8.0	2	171	342
	5	8.0	2	202	404
	6	8.0	2	793	1586
	7	8.0	4	389	1556
	8	8.0	4	423	1692
	9	8.0	2	405	810
	10	8.0	2	199	398
	11	8.0	2	222	444
	12	8.0	2	424	848

RESUMO DO AÇO

AÇO	DIAM (mm)	C.TOTAL (m)	PESO + 10% (kg)
CA50	8.0	129.9	56.4
CA60	5.0	143.3	24.3

PESO TOTAL (kg)	
CA50	56.4
CA60	24.3

Volume de concreto (C-25) = 1.20 m³
Área de forma = 23.24 m²



Vigas			
Nome	Seção (cm)	Elevação (m)	Nível (m)
V1	14x30	0.00	2.95
V2	14x30	0.00	2.95
V3	14x30	0.00	2.95
V4	14x30	0.00	2.95
V5	14x30	0.00	2.95
V6	14x30	0.00	2.95
V7	14x30	0.00	2.95

Características dos materiais

fck (MPa)	Ecs (MPa)
25	24150

Pilares			
Nome	Seção (cm)	Elevação (m)	Nível (m)
P1	14x26	0.00	2.95
P3	14x26	0.00	2.95
P4	14x26	0.00	2.95
P6	14x26	0.00	2.95
P7	14x26	0.00	2.95
P8	14x26	0.00	2.95
P9	14x26	0.00	2.95

Legenda dos pilares

	Pilar que morre
--	-----------------

Legenda das vigas e paredes

	Viga
--	------

Forma do pavimento Respaldo

escala 1:50

Projeto:



Sehnem Engenharia LTDA

CNPJ: 45.758.913/0001-00

CREA/SC 189648-6

Fone: (49) 98413 3214

E-mail: sehnemengenharia@gmail.com

Rua São José, 155 - Edifício Klemann - Sala 01

Centro, Itapiranga-SC

Proprietário:

Município de Tunápolis - SC
CNPJ: 78.486.198/0001-52

Assinatura:

Obra:

REFORMA E AMPLIAÇÃO DO CENTRO ESPORTIVO MUNICIPAL

Entorno à reformar:

73,26 m²

Edificação à reformar:

355,71 m²

Área à ampliar:

160,35 m²

Área intervinde:

589,52 m²

Local/Cidade:

Avenida Cerro Largo, Centro, Tunápolis-SC

Projeto:

ESTRUTURAL

Referência: Forma Respaldo

Vigas Respaldo

Prancha:

05 / 05

Escala:

Indicada

Data:

Setembro/2022

Arquivo Digital:

tunapolis_centro_esportivo_rev02.dwg

Desenho:

Tailor

Resp. Técnico:

TAILOR SEHNEM - CREA/SC 154411-3

Assinatura: