

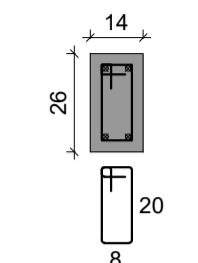


Recortar

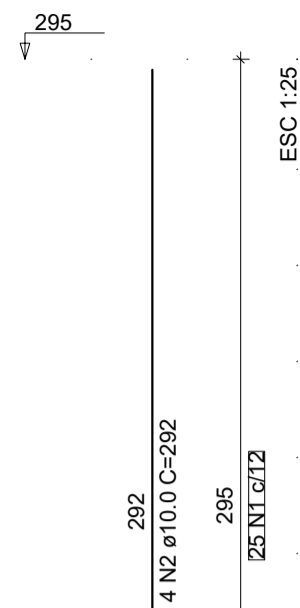


P1  
RESPALDO - L2

SEÇÃO  
ESC 1:20

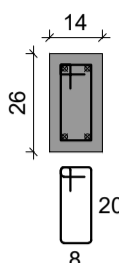


25 N1 ø5.0 C=67

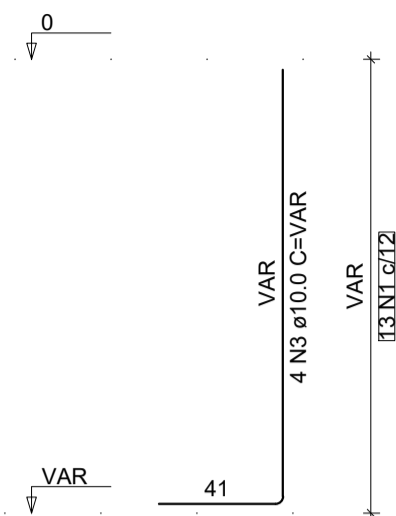


P2  
BALDRAME - L1

SEÇÃO  
ESC 1:20

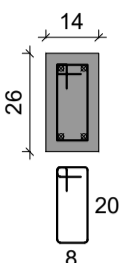


13 N1 ø5.0 C=67

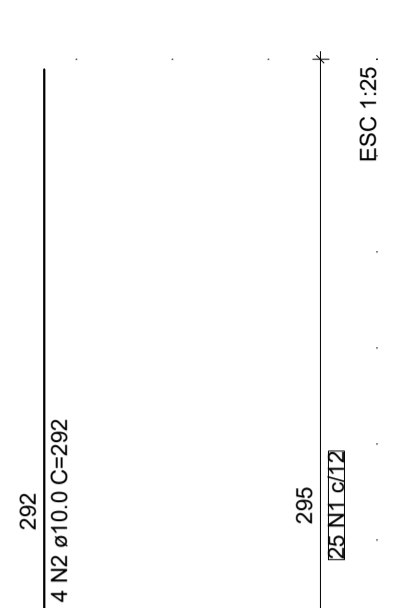


P3  
RESPALDO - L2

SEÇÃO  
ESC 1:20

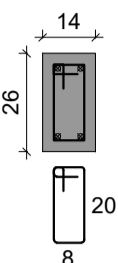


25 N1 ø5.0 C=67

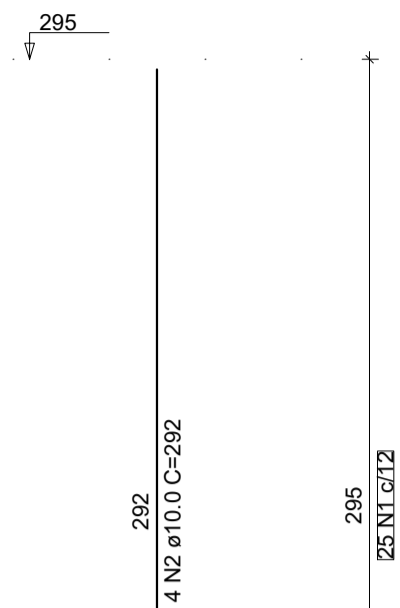


P4  
RESPALDO - L2

SEÇÃO  
ESC 1:20

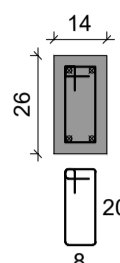


25 N1 ø5.0 C=67

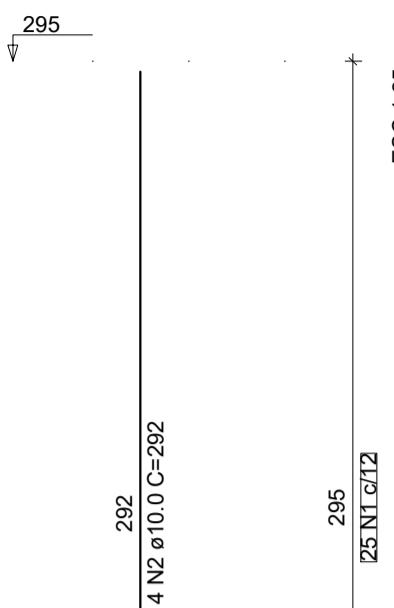


P6  
RESPALDO - L2

SEÇÃO  
ESC 1:20

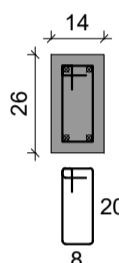


25 N1 ø5.0 C=67

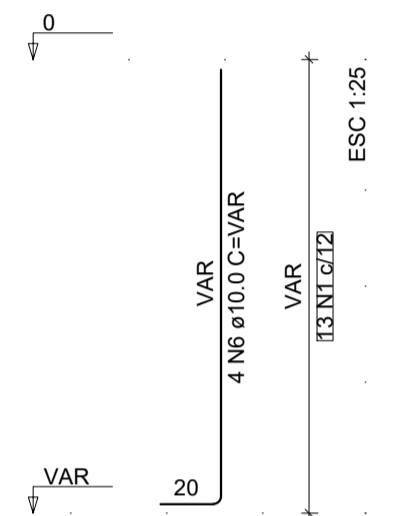


P5  
BALDRAME - L1

SEÇÃO  
ESC 1:20

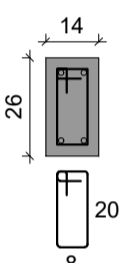


13 N1 ø5.0 C=67

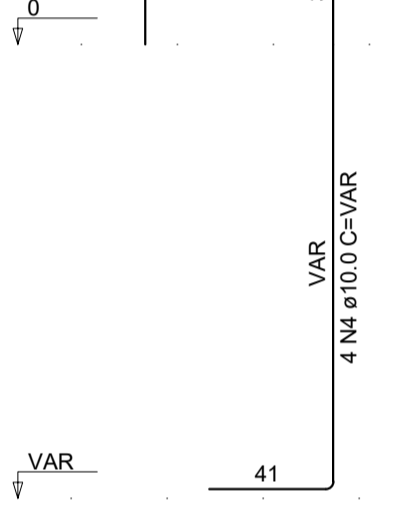


BALDRAME - L1

SEÇÃO  
ESC 1:20

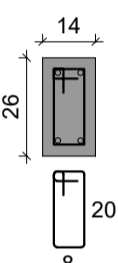


13 N1 ø5.0 C=67

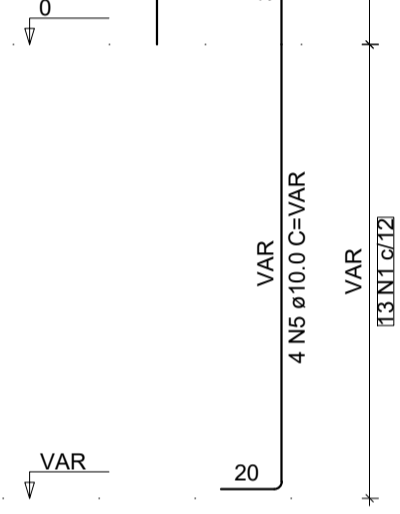


BALDRAME - L1

SEÇÃO  
ESC 1:20

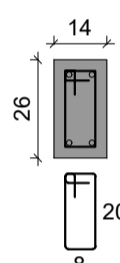


13 N1 ø5.0 C=67

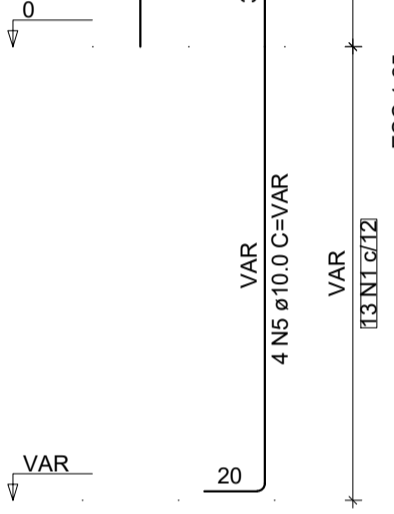


BALDRAME - L1

SEÇÃO  
ESC 1:20

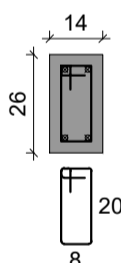


13 N1 ø5.0 C=67

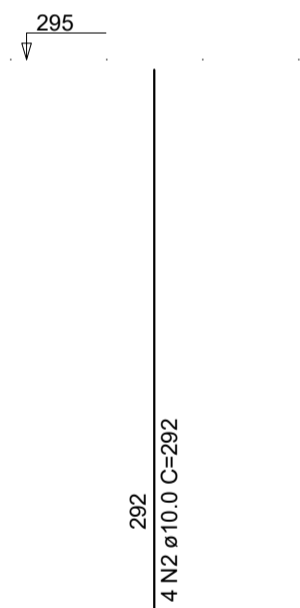


P7  
RESPALDO - L2

SEÇÃO  
ESC 1:20

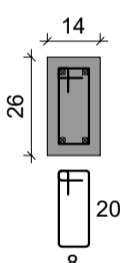


25 N1 ø5.0 C=67

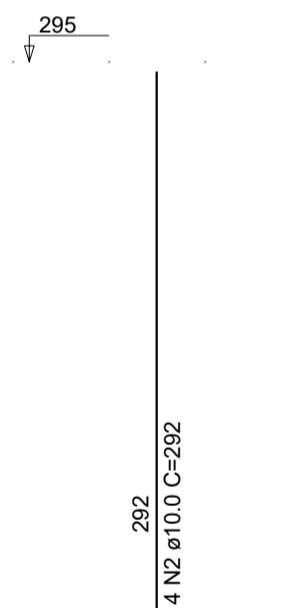


P8  
RESPALDO - L2

SEÇÃO  
ESC 1:20

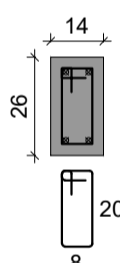


25 N1 ø5.0 C=67

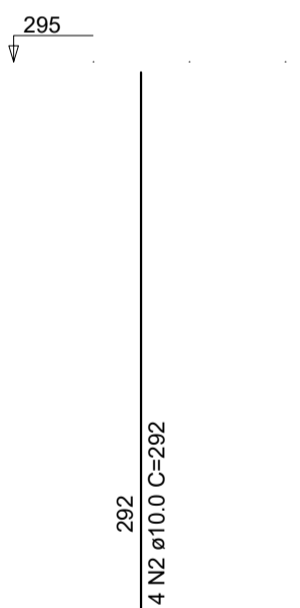


P9  
RESPALDO - L2

SEÇÃO  
ESC 1:20

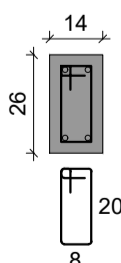


25 N1 ø5.0 C=67

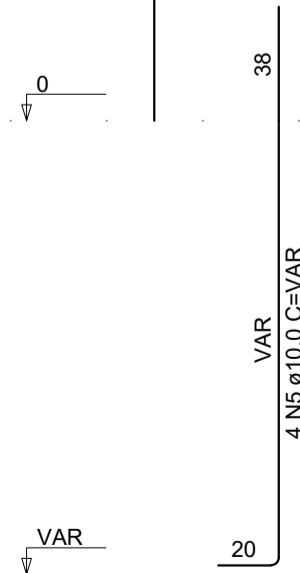


BALDRAME - L1

SEÇÃO  
ESC 1:20

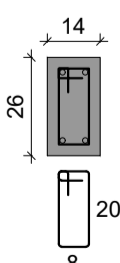


13 N1 ø5.0 C=67

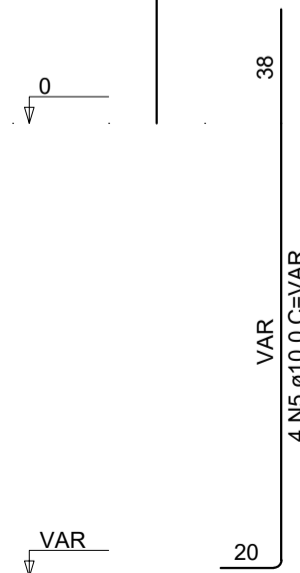


BALDRAME - L1

SEÇÃO  
ESC 1:20

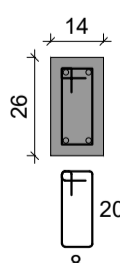


13 N1 ø5.0 C=67

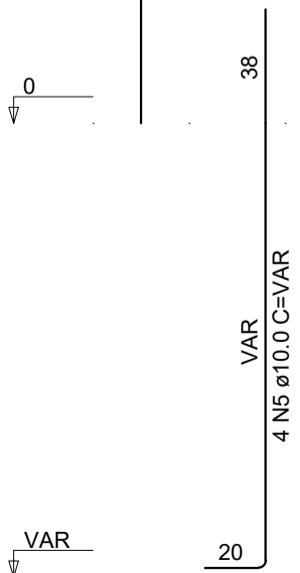


BALDRAME - L1

SEÇÃO  
ESC 1:20



13 N1 ø5.0 C=67



RELAÇÃO DO AÇO


P1-L2	P2-L1	P3-L2
P3-L1	P4-L2	P4-L1
P5-L1	P6-L2	P6-L1
P7-L2	P7-L1	P8-L2
P8-L1	P9-L2	P9-L1

AÇO	N	DIAM (mm)	QUANT	C.UNIT (cm)	C.TOTAL (cm)
CA60	1	5.0	279	67	18693
CA50	2	10.0	28	292	8176
	3	10.0	4	VAR	VAR
	4	10.0	4	VAR	VAR
	5	10.0	20	VAR	VAR
	6	10.0	4	VAR	VAR

RESUMO DO AÇO

Volume de concreto (C-25) = 1.11 m³  
Área de forma = 26.12 m²

AÇO	DIAM (mm)	C.TOTAL (m)	PESO + 10% (kg)
CA50	10.0	145.1	98.4
CA60	5.0	186.9	31.7
PESO TOTAL (kg)			
CA50			98.4
CA60			31.7

Projeto:  **Sehnm Engenharia LTDA**  
 CNPJ: 45.758.913/0001-00  
 CREA/SC 189648-6

Fone: (49) 98413 3214  
 E-mail: sehnmengenharia@gmail.com  
 Rua São José, 155 - Edifício Kliemann - Sala 01  
 Centro, Itapiranga-SC

Proprietário: **Município de Tunápolis - SC**  
 CNPJ: 78.486.198/0001-52

Assinatura: \_\_\_\_\_

Obra: **REFORMA E AMPLIAÇÃO DO CENTRO ESPORTIVO MUNICIPAL**  
 Entorno à reformar: 73,26 m² | Edificação à reformar: 355,71 m² | Área a ampliar: 160,55 m² | Área intervinde: 589,52 m²

Local/Cidade: **Avenida Cerro Largo, Centro, Tunápolis-SC**

Projeto: **ESTRUTURAL**

Referência: Pilares

Prancha: **03 / 05**

Escala: \_\_\_\_\_ | Data: **Setembro/2022** | Arquivo Digital: **tunapolis\_centro\_esportivo\_rev02.dwg** | Desenho: **Tailor**

Resp. Técnico: **TAILOR SEHNEM - CREA/SC 154411-3** | Assinatura: \_\_\_\_\_