



IFProjetos
CNPJ:28.958.418/0001-25

São Miguel do Oeste-SC
Rua Itaberaba, nº970, sala 02
Tunápolis-SC
Rua Santa Cruz, nº211, sala 01
Fone/Whatsapp: (49)991040658

Móvel 33

Especificação material

Marca: MDF de Arauco

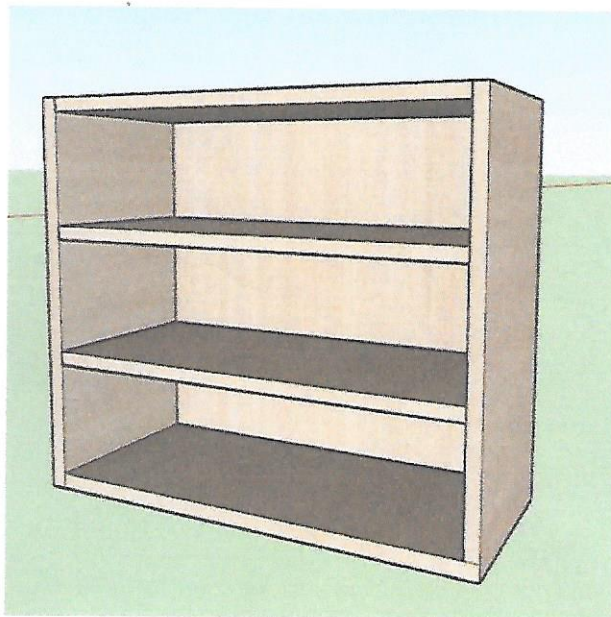
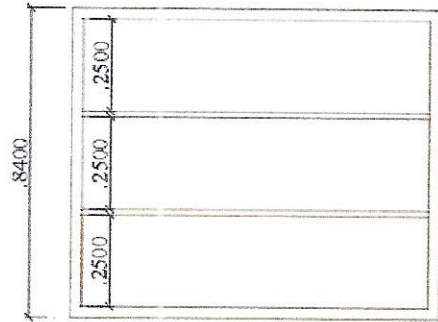
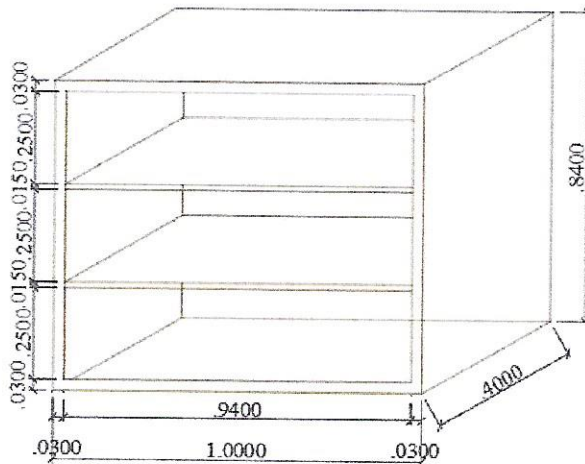
Espessura: 3cm ou 300mm divisórias internas 1,5cm ou 150mm

Cor: Carvalho Ibiza



Imagem cor do MDF

Obs: Com fundo





IFProjetos
CNPJ:28.958.418/0001-25

São Miguel do Oeste-SC
Rua Itaberaba, nº970, sala 02
Tunápolis-SC
Rua Santa Cruz, nº211, sala 01
Fone/Whatsapp: (49)991040658

Móvel 38

Especificação material

Marca: MDF de Arauco

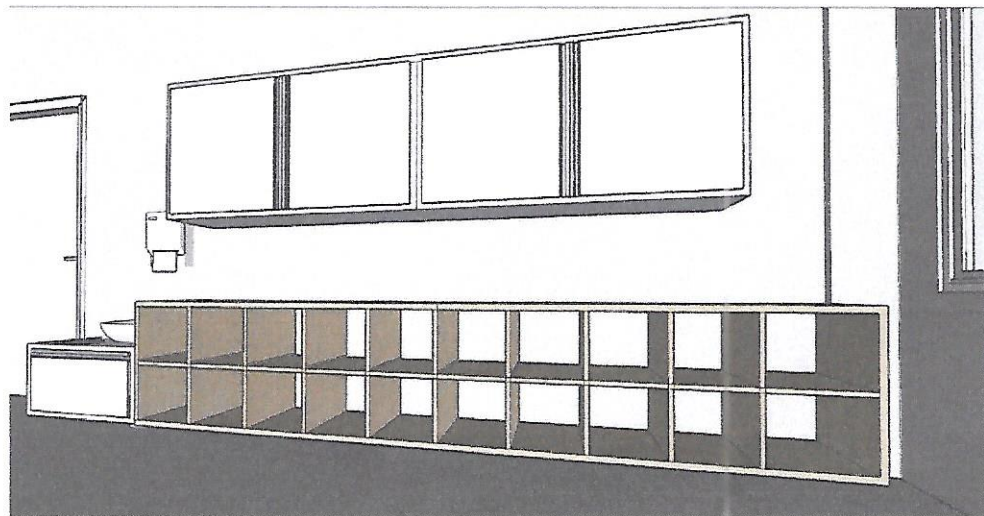
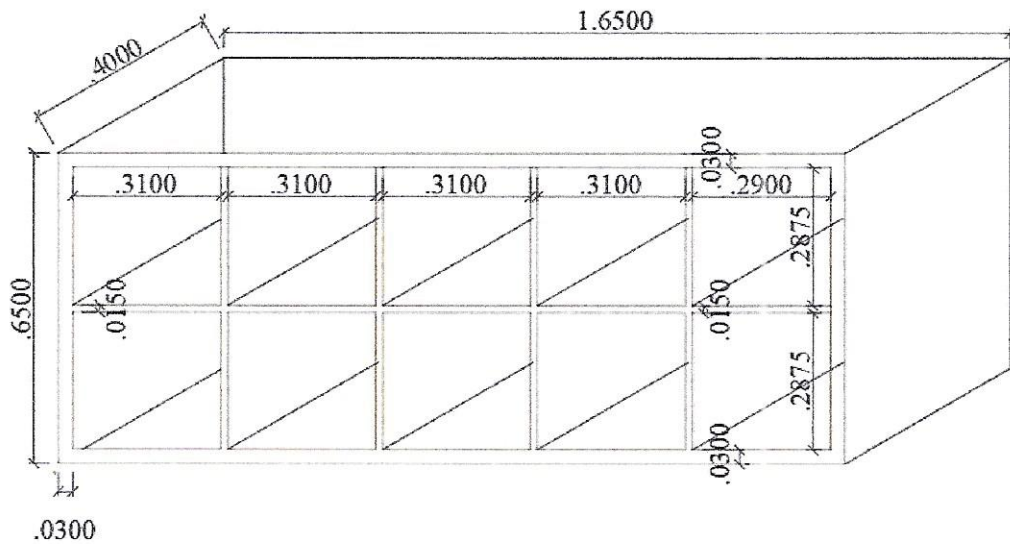
Espessura: 1,5cm ou 150mm pés reforçados

Bordas arredondadas

Cor: Carvalho Ibiza



Imagem cor do MDF





IFProjetos
CNPJ:28.958.418/0001-25

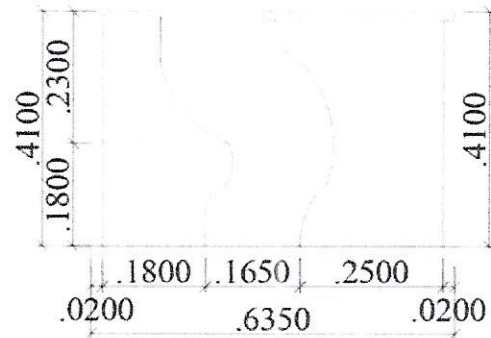
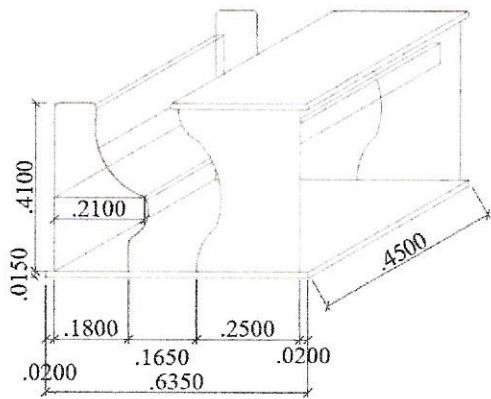
São Miguel do Oeste-SC
Rua Itaberaba, nº970, sala 02
Tunápolis-SC
Rua Santa Cruz, nº211, sala 01
Fone/Whatsapp: (49)991040658

Móvel de alimentação

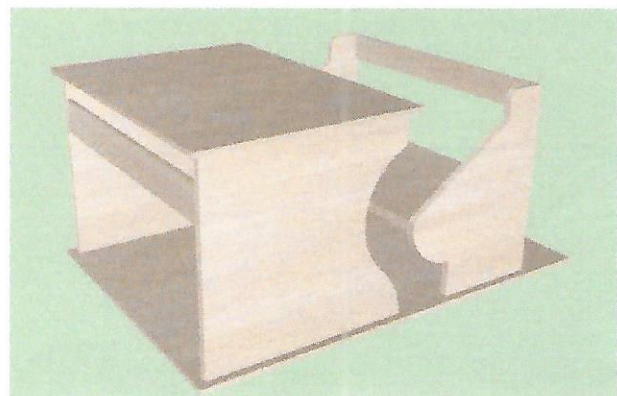
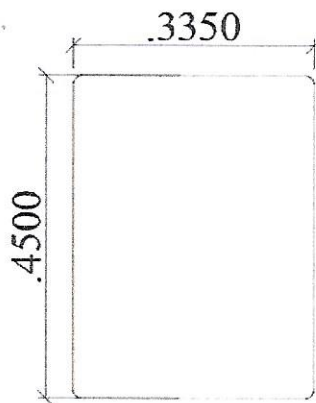
Especificação material:

Madeira Pinus lixada com cantos arredondados de boa qualidade

Cor: Cru envernizada com Verniz atóxico

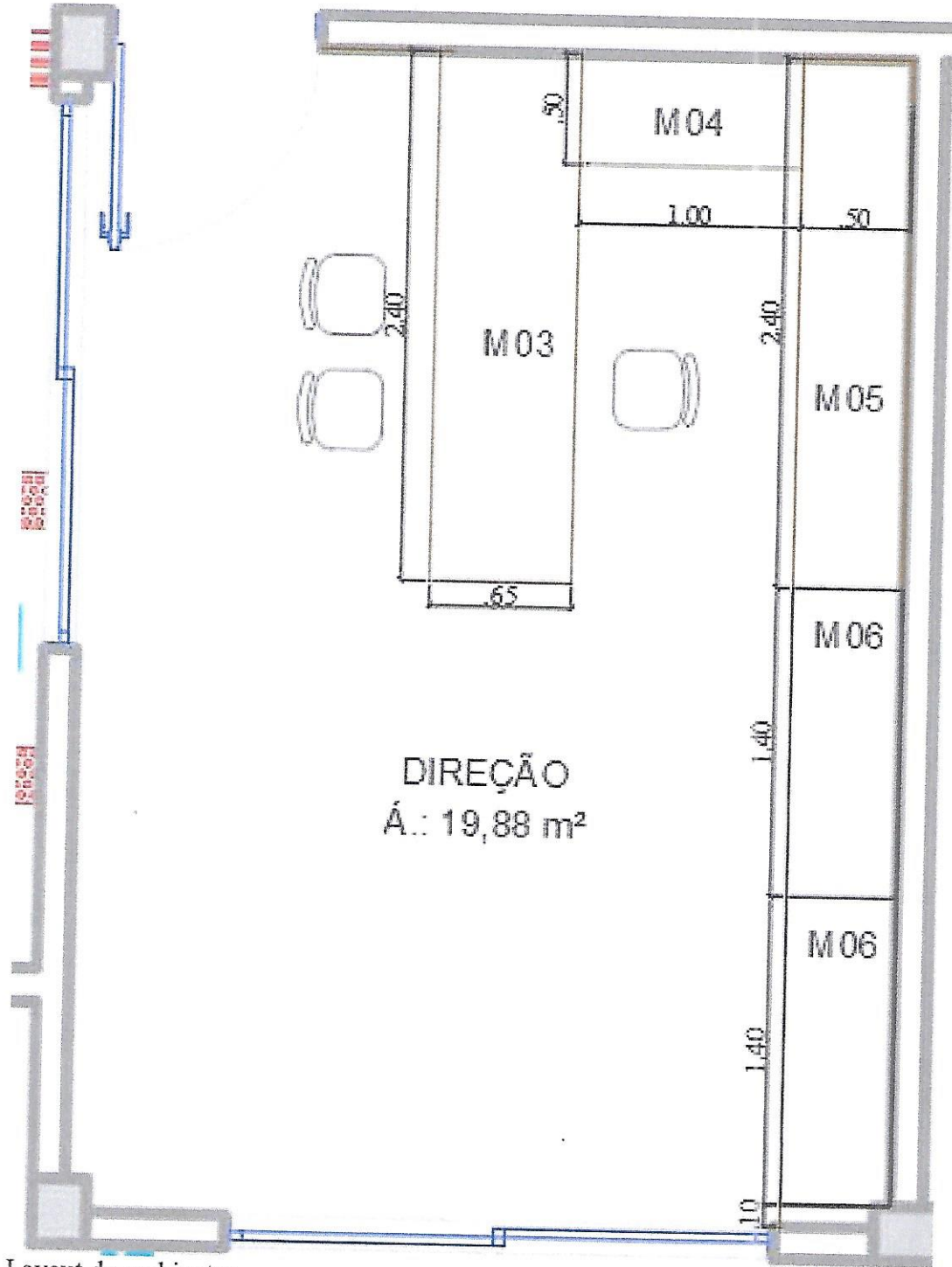


- Medidas do móvel





Ambiente: Sala Diretora



Layout do ambiente: